



Blairs. Ag & Guests
cattle company

OPPORTUNITY KNOCKS

Sale 3.0
December 19, 2022



AT THE RANCH IN LANIGAN - SALE BEGINS AT 3:00 PM



Sale Day Information

Monday, December 19, 2022
At The Ranch, Lanigan, SK | 3:00 PM

AUCTIONEER:

Chris Poley 306.220.5006

RINGSIDE:

Shane Michelson 403.363.9973
Ben Wright 519.374.3335
Nate Marin 306.869.7130

SALE MANAGEMENT:

T Bar C Cattle Co. Ltd.

Chris Poley 306.220.5006
Shane Michelson 403.363.9973
Ben Wright 519.374.3335
Chad Wilson 306.577.1256

SALE DAY PHONES:

Kevin Blair 306.365.7922
Blake MacMillan 306.528.7484
Baxter Blair 306.699.7807
Craig Blair 306.699.7607
Chara Blair 306.699.7037
Bryan Willms 306.492.7504
Tracey Willms 306.380.6772
Maguire Blair 306-360-7716
Scott Blair 306.365.7649
Calla Blair 306.365.7799
Rhett Jones 306-629-7878

INSURANCE:

Canadian Farm Insurance Corp.

Jill Wildman 780.447.3276

HOTEL:

Manitou Springs Resort

302 MacLachlan Ave
Manitou Beach SK S0K 4T1
306.946.2233

SALE CONSULTANTS

The following astute cattlemen have a working knowledge of our programs and would love to visit with you about the sale offering & to offer their assistance.

Bohrson Marketing

Scott Bohrson 403.370.3010
Rob Voice 306.270.6082
Jaxon Payne 306.830.0456

OBI Livestock Ltd.

Mark Holowaychuk 403.896.4990
Roger Peters 403.828.9815
Kurt Pedersen 780.209.9999

US Representative

Kiley McKinna 402.627.8266
Kent McCune 817.602.8629
PJ Budler 682.597.0380
Mike Marlow 405.880.0108

Internet Bidding Available

DLMS
www.dlms.ca

For more information call DLMS:
Mark Shologan 780.699.5082 or
DLMS Purebred Team 780.991.3025

ONLINE BIDDING:

Mark Shologan
780.699.5082
www.dlms.ca

DVAuction
Broadcasting Real-Time Auctions

Visit www.DVAuction.com
and Register Today!

For General Questions Please Contact Our Office:
(402) 316-5460 or support@dvauction.com

ONLINE BIDDING

DV Auction
Sarah Hasson
306.681.5340
Tech Support
402-316-5460
sarah@goldenthread.ca

Come for the Cattle & Stay for the Hospitality
Supper at 5:00 pm

Blairs.Ag
cattle company

**OPPORTUNITY
KNOCKS**
Sale 3.0



Welcome from Blairs. Ag



The world is a crazy place. While all this chaos is happening, the world of primary production is being rewarded on the revenue side of the business and challenged on the supply side. Have confidence that Agriculture will always be a safe space and a great place to raise a family.

I am excited to welcome back a great group of partners for Opportunity Knocks 3.0 and I am confident the offering will appeal to all types of breeders with all types of needs. This year the sale includes Red's, Black's and the very top (nothing held back) of our black/red carrier program. The catalog is full of the best genetics from every program as everyone is committed to offering their very best.

If you can get out for a tour prior to the sale, please contact the sale partners to arrange a visit, but if not, we would love to have you at the ranch in Lanigan on sale day. We are excited with the feedback from the Christmas meal we served last year and you can expect the same outstanding meal on December 19th, 2022.

Kevin Blair

From the desk at T Bar C...

Welcome to Blairs.Ag Cattle Company and Guests "Opportunity Knocks" Female Sale 3.0 at the ranch, Lanigan, Saskatchewan. Along with their sale partners, Blairswest Land and Cattle, Double B Angus and Wilbar Cattle Company, they offer an outstanding lineup of seedstock opportunities for your front pasture. Blacks, Reds, and the entire Black/Red program headline this all-star cast.

Blairs.Ag and their sale partners run a large embryo transfer program building elite cow families from super donor dams. In this the third sale, they have dipped deep into the embryo pool to offer opportunities one can capitalize on... by offering these embryos they are creating their own competition. The Argentine genetics offer a complete outcross to this potent gene pool to select from.

After a very successful summer show season, Blairs.Ag and the partners are ready for Agribition. Many of these powerful genetics will be on display. We urge you to stop by the stalls and visit about the unique opportunities available. Do not hesitate to give Kevin, Darren, or any of their guests a call or stop by their farms and preview their lineup.

The livestock industry is exciting, and the future looks even brighter as we look at restocking the North American cowherd. With year-end around the corner, "Opportunity Knocks" can enhance your own breeding program and save you some tax dollars...so make sure you don't become a member of the "wish I had" club.

Plan to be with us for "Angus opportunity day" in Lanigan on December 19th. Remember this is a 3:00 PM start time. Feel free to give any of the T Bar Team a call and we will assist with your purchases in a professional and confidential manner.

Chris Poley



Chris Poley
306-220-5006



Shane Michelson
403-363-9973



Ben Wright
519-374-3335



T Bar C Cattle Co. Ltd
306-933-4200

Erica's 10th birthday



Lot 1A, B, C

Erica 74A

Bar E-L Erica 74A is 10 years old and to celebrate that milestone we are offering a unique, rare opportunity in Opportunity Knocks 3.0. Erica 74A has been the kind of female that dreams are made of and programs are built around. We are proud of the legacy that Erica 74A is leaving in the Angus breed and we are excited to see her genetics continue to impact programs.

1A

Final Flush Sells!

BAR-E-L ERICA 74A

YHB 74A | FEB. 02, 2013 | 1745491

S A V BISMARCK 5682
BAR-E-L NATURAL LAW 52Y
 BAR-E-L MAGNOLIA 143K

PEAK DOT FAME 2N
HF ERICA 339T
 HF ERICA 46P

G A R GRID MAKER
 S A V ABIGALE 0451
 BAR-E-L MCC 365 ICON 20H
 DOUBLE FOUR DUCHESS 12G
 S A R FAME 2089
 BARBARA OF PEAK DOT 642F
 HF POWER SOURCE 94M
 ERICA OF RANNOCH 122C

CE	BW	WW	YW	MILK
4.0	3.6	56	91	27

- Selling rights to an IVF flush on Erica 74A
- Flush to be done at Transova Onida SD
- Min 8 embryo's with no top
- Flush to be done in July 2023
- This is the **LAST FLUSH** to ever be sold on Bar E-L Erica 74A

1B

EMBRYOS | BAR-E-L ERICA 74A

CUSTOM EMBRYO BASKET | BUYERS CHOICE | 16 EMBRYOS

A rare & unique opportunity to fill your basket with (16) embryos of your choice. The winning bidder will get to make their choice from the seats. Mix & match or take all one mating as it's your choice.
 Guaranteed 50% conception

1C

EMBRYOS | BAR-E-L ERICA 74A

CUSTOM EMBRYO BASKET | BUYERS CHOICE | 12 EMBRYOS

If a smaller basket suits your fancy, use this choice to select (12) embryos from the extensive list from any matings.
 Guaranteed 50% conception

Build Your Embryo Basket

WITH BAR-E-L ERICA 74A

CHOOSE FROM OUR ENTIRE EMBRYO INVENTORY!

E1

SAV MAGNUM 1335 X BAR-E-L ERICA 74A

15 EMBRYOS STORED AT TRANSOVA – IOWA

MEAD MAGNITUDE
SAV MAGNUM 1335
S A V EMBLYNETTE 9023

K C F BENNETT SOUTHSIDE
MEAD PRIMROSE N198
LD CAPITALIST 316
S A V EMBLYNETTE 7505

- Qualified for Canada and Mexico

E2

MCCUMBER LA JOYA 098 X BAR-E-L ERICA 74A

23 EMBRYOS STORED AT TRANSOVA – IOWA

OCC ZODIAC 655Z
MCCUMBER LA JOYA 098
LASSIE 113 OF MC CUMBER

O C C UMAX 820U
O C C DIXIE ERICA 628W
O C C MISSING LINK 830M
LASSIE 935 OF MC CUMBER

- Qualified for Canada & US

E3

BROOKING FIREBRAND 6068 X BAR-E-L ERICA 74A

2 EMBRYOS STORED AT TRANSOVA – IOWA

BROOKING BANK NOTE 4040
BROOKING FIREBRAND 6068
BROOKING ANNIE K 390

CONNEALY EARNAN 076E
E A ROSE 918
S A V BEST INTEREST 0136
SOO LINE ANNIE K 9165

- Qualified for Canada & US

E4

SAV JESSE JAMES 0968 X BAR-E-L ERICA 74A

9 EMBRYOS STORED AT TRANSOVA IOWA

S A V RENOVATION 6822
SAV JESSE JAMES 0968
S A V BLACKCAP MAY 8961

12 EMBRYOS STORED AT BLAIRSWEST
S A V RENOWN 3439
S A V MADAME PRIDE 0151
S A V 8180 TRAVELER 004
S A V MAY 2397

- Qualified for Canada and Mexico

E5

DUFF NAPOLEON 232 X BAR-E-L ERICA 74A

6 EMBRYOS STORED AT TRANSOVA – IOWA

DUFF DISTINCTION 9105
DUFF NAPOLEON 232
DUFF EUR 443 MERLE 808

DUFF BASIC INSTINCT 6501
DUFF NL B351 LADY POP 619
DUFF NEW EDITION 6108
DCC NL 652K MERLE 443

- Qualified for USA only

E6

SAV RENOWN 3449 X BAR-E-L ERICA 74A

5 EMBRYOS STORED AT AT BOW VALLEY GENETICS – ALBERTA

RITO 707 OF IDEAL 3407 7075
SAV RENOWN 3449
S A V BLACKCAP MAY 4136

R R RITO 707
IDEAL 3407 OF 1418 076
S A V 8180 TRAVELER 004
S A V MAY 2397

- Qualified for Canada

E7

SAV RAINFALL 6846 X BAR-E-L ERICA 74A

10 EMBRYOS STORED AT TRANSOVA – IOWA
8 EMBRYOS STORED BLAIRSWEST

COLEMAN CHARLO 0256
SAV RAINFALL 6846
S A V BLACKCAP MAY 4136

O C C PAXTON 730P
BOHI ABIGALE 6014
S A V 8180 TRAVELER 004
S A V MAY 2397

- Qualified for Canada and Mexico

E8

S A V TERRITORY 7225 X BAR-E-L ERICA 74A

6 EMBRYOS STORED AT BLAIRSWEST

S A V RESOURCE 1441
S A V TERRITORY 7225
S A V EMBLYNETTE 3293

RITO 707 OF IDEAL 3407 7075
S A V BLACKCAP MAY 4136
S A V 004 DENSITY 4336
S A V EMBLYNETTE 7411

- Qualified for Canada

E9

RED DUFF HD 2046 X BAR-E-L ERICA 74A

6 EMBRYOS STORED AT TRANSOVA – IOWA

RED MANN RED BOX 55C
RED DUFF HD 2046
RED DUFF CITA 4060 15522

RED SLGN WIDELoad 920W
RED PELTON MISS AJA 0839U
DUFF NAPOLEON 232
RED GT CITA 4060

- Qualified for Canada & US

E10

S A V AMERICA 8018 X BAR-E-L ERICA 74A

18 EMBRYOS STORED AT BLAIRSWEST

S A V PRESIDENT 6847
S A V AMERICA 8018
S A V MADAME PRIDE 0075

COLEMAN CHARLO 0256
S A V BLACKCAP MAY 4136
S A F 598 BANDO 5175
S A V MADAME PRIDE 8264

- Qualified for Canada and Mexico

E11

COLBORN PRIMO 5153 X BAR-E-L ERICA 74A

1 EMBRYOS STORED AT BOW VALLEY GENETICS – ALBERTA

DAMERON FIRST CLASS
COLBORN PRIMO 5153
SILVEIRAS SARAS DREAM

EXG RS FIRST RATE S903
DAMERON NORTHERN MISS 3114AAA
SILVEIRAS STYLE 9303AAA
EXG SARAS DREAM S609

- Qualified for Australia

E12

LAZY JB SUNDANCE 6428 X BAR-E-L ERICA 74A

5 EMBRYOS STORED AT BLAIRSWEST

KR CASH 4010
LAZY JB SUNDANCE 6428
LAZY JB BLACKBIRD ZENA 428

BARSTOW CASH
SUMMITCREST ELBA 1W01
LAZY JB BACARDI 8000
LAZY JB BLACKBIRD 928

- Qualified for Canada

E13

MJT IMPRESSIVE 813F X BAR-E-L ERICA 74A

12 EMBRYOS STORED AT BLAIRSWEST
3 EMBRYOS STORED BOW VALLEY GENETICS – ALBERTA

MAF FIRST IMPRESSION 4420
MJT IMPRESSIVE 813F
DMM BLACKCAP ESSENCE 7Y

DAMERON FIRST IMPRESSION
M A F MISS JETSTREAM 2928
GUMBO GULCH CREED 94S
DMM BLACKCAP ESSENCE 46U

- Qualified for USA

THE LEGACY OF BAR-E-L ERICA 74A



BLAIRSWEST ERICA 77J | Owned by Koberstein's Triangle K and Rainbow Red Angus (Alberta)



BLAIR'S ERICA 265F | Owned by KT Ranches/Canadian Donors (BC)



HLC ERICA 561G | Hollinger Land & Cattle, CSI, and Schaff Angus Valley (SK/ND)



BLAIR'S ERICA 267F | Golden Oak Livestock (Alberta)



BLAIRSWEST ERICA 84H | Sadler Ranches (Oklahoma)



BLAIR'S EXTERNAL LAW 266F | Duff Cattle Company (Oklahoma)



BLAIRSWEST ERICA 5H | Wooden Shoe (Idaho) and Tymber Bilman



BLAIRS ROCCO 268F | owned with Skull Creek Ranch



BLAIRSWEST MISS ERICA 400C | Angus El Camalion (Mexico)



BLAIR'S MARTIAL LAW 593E | owned with Duff Cattle Co.

Progeny of
BAR-E-L ERICA 74A



Lot 2



BLAIRSWEST ERICA 6K

MJNB 6K | JAN. 16, 2022 | 2250239

DUFF DISTINCTION 9105
DUFF NAPOLEON 232
 DUFF EUR 443 MERLE 808

DUFF BASIC INSTINCT 6501
 DUFF NL B351 LADY POP 619
 DUFF NEW EDITION 6108
 DCC NL 652K MERLE 443
 S A V BISMARCK 5682
 BAR-E-L MAGNOLIA 143K
 PEAK DOT FAME 2N
 HF ERICA 46P

BAR-E-L NATURAL LAW 52Y
BAR-E-L ERICA 74A
 HF ERICA 339T

CE	BW	WW	YW	MILK
5.5	2.3	53	82	20

This is one that we hold very close to our heart here at Blairswest. Erica 74A x Duff Napoleon is a combination like Wayne Gretzky and Mark Messier. If you were in attendance for Opportunity Knocks 2.0 the Napoleon x Erica cows were a true highlight averaging \$28000. 6K is a full sister to the highly talked about External Law bull that walks the land at Duff Cattle Company in Hobart, Oklahoma. 6K has a very up headed presence with a deep sweeping rib cage and is very structurally attractive and has ideal teat placement and a nice udder developing which is sure to impress. Stop by our stall at Canadian Western Agribition to view the sale cattle. Don't miss 6K come sale day. Retaining the right to one successful future flush at the buyer's convenience and the seller's expense.



SIRE: DUFF NAPOLEON 232



DAM: BAR-E-L ERICA 74A



Lot 3



BLAIRSWEST ERICA 25K

MJNB 25K | FEB. 1, 2022 | 2280098

JMB TRACTION 292
SCHIEFELBEIN ATTRACTIVE 4565
 FROSTY ANSWER 3979

SILVEIRAS S SIS GQ 2353
BLAIRSWEST ERICA 16E
 BAR-E-L ERICA 74A

SITZ TOP GAME 561X
 JMB EMULOTA 013
 S A V FINAL ANSWER 0035
 FROSTY ELBA LIZZY 1106
 SILVEIRAS STYLE 9303
 K N C CABIN CREEK SANDY 804
 BAR-E-L NATURAL LAW 52Y
 HF ERICA 339T

CE	BW	WW	YW	MILK
8	1.6	69	118	27

Well, here is one that is unique in terms of power and that show ring look. This heifer has changed so much she deserves another photo op! But your opportunity to purchase comes on December 19. Attractive 4565 was heavily used in our herd and we are impressed with the calves. 25K is one that is neat fronted, lots of depth of rib and this one is sure hairy and could easily be on a halter. She stands in the top 5 % in WW and top 10% of YW, her Coleman Bravo maternal sister will highlight our bred heifer group. This is one we think will be a very functional bred heifer and a cool donor in the future. Her half sister sells as lot 5.
 Parent Verified.



GRANDDAM: BAR-E-L ERICA 74A



SIRE: SCHIEFELBEIN ATTRACTIVE 4565

"She's an Erica" and she will catch your fancy on sale day. This is the only female we got from this flush by Stunner but we have a couple full brothers selling in our Feb 7th bull sale that will be features. We couldn't be more proud of Erica 74A and the legacy she is leaving and we expect 533K will make the new owners proud to own an Erica.



GRAND-DAM: BAR-E-L ERICA 74A



Featuring Erica 74A

4

BLAIR'S ERICA 533K

BBC 533K | MAR. 6, 2022 | 2274107

LD CAPITALIST 316
MUSGRAVE 316 STUNNER
 MCATL BLACKBIRD 831-1378

BAR-E-L NATURAL LAW 52Y
BAR-E-L ERICA 74A
 HF ERICA 339T

CONNELLY CAPITALIST 028
 LD DIXIE ERICA 2053
 MCATL PURE PRODUCT 903-55
 MCATL BLACKBIRD 1378-573
 S A V BISMARCK 5682
 BAR-E-L MAGNOLIA 143K
 PEAK DOT FAME 2N
 HF ERICA 46P

CE	BW	WW	YW	MILK
5	1.8	63	104	32



Featuring Erica 74A

5

BLAIRSWEST ERICA 16J

MJNB 16J | FEB. 1, 2021 | 2282724

COLEMAN CHARLO 0256
COLEMAN BRAVO 6313
 COLEMAN DONNA 714

SILVEIRAS S SIS GQ 2353
BLAIRSWEST ERICA 16E
 BAR-E-L ERICA 74A

O C C PAXTON 730P
 BOHI ABIGALE 6014
 CONNEALY ONWARD
 COLEMAN DONNA 386
 SILVEIRAS STYLE 9303
 K N C CABIN CREEK SANDY 804
 BAR-E-L NATURAL LAW 52Y
 HF ERICA 339T

CE	BW	WW	YW	MILK
13	-0.1	44	78	21

This is a black bred that highlights our offering, kind of neat to offer two maternal sisters that are both high in quality. Very elegant fronted with great depth of body and dimension.

We feel in terms of foot and udder quality we rank this one very high, her dam 16E has a very tidy udder. Her maternal sibling sells at lot 3.

Parent Verified

- Al'ed to Sitz Resilient 10208 on April 30, 2022 Favorable to AI.
- Pasture exposed to Merit Whiskey 8010 from May 10 to June 21, 2022.



SIRE: COLEMAN BRAVO 6313



GRAND-DAM: BAR-E-L ERICA 74A



Lot 5



Opportunity Knocks 3.0 brings you four (4) full sister off the 2018 RBC Supreme Champion Female PM Echo 8D and you will want to sit up and pay attention. The mating of SAV Renown on Natural Law daughters works every time and the consistency within this flush is wild. Bar E-L Natural Law is becoming known world wide as the proficient female maker and we are fortunate to own two of the greatest ones in Bar E-L Erica 74A(5 time Grand Champion Female) and PM Echo 8D(2017 CWA Reserve Champion Female, 2018 CWA Grand Champion Female, 2018 RBC Supreme Champion Female). I think the sale name says it all here..... Opportunity Knocks!! Full brothers sell on Feb 7th in Pursuit of Excellence Bull Sale.

6

BLAIR'S ECHO 541K

BBC 541K | MAR. 11, 2022 | 2274050

RITO 707 OF IDEAL 3407 7075
S A V RENOWN 3439
 S A V BLACKCAP MAY 4136

R R RITO 707
 IDEAL 3407 OF 1418 076
 S A V 8180 TRAVELER 004
 S A V MAY 2397
 S A V BISMARCK 5682
 BAR-E-L MAGNOLIA 143K
 HF EL TIGRE 28U
 HF ECHO 207N

BAR-E-L NATURAL LAW 52Y
PM ECHO 8'16
 HF ECHO 111Y

CE	BW	WW	YW	MILK
0	3.3	65	117	26

Full brothers sell on Feb 7th in Pursuit of Excellence Bull Sale.
 Entered at CWA.
 Retaining the right to one successful flush at Buyers convenience & sellers expense



DAM: PM ECHO 8'16



7

BLAIR'S ECHO 542K

BBC 542K | MAR. 12, 2022 | 2274086

RITO 707 OF IDEAL 3407 7075
SA V RENOWN 3439
 SA V BLACKCAP MAY 4136

BAR-E-L NATURAL LAW 52Y
PM ECHO 8'16
 HF ECHO 111Y

R R RITO 707
 IDEAL 3407 OF 1418 076
 SA V 8180 TRAVELER 004
 SA V MAY 2397
 SA V BISMARCK 5682
 BAR-E-L MAGNOLIA 143K
 HF EL TIGRE 28U
 HF ECHO 207N

CE	BW	WW	YW	MILK
0	3.3	65	117	26

Full brother sells on Feb 7th in Pursuit of Excellence Bull Sale.
 Entered at CWA.
 Retaining the right to one successful flush at Buyers convenience & sellers expense



SIRE: PM ECHO 8'16



MATERNAL SIBLING: BLAIRS DM LEGEND 504H



Lot 8

8

BLAIR'S ECHO 572J

BBC 572J | APR. 2, 2021 | 2269149

RITO 707 OF IDEAL 3407 7075
S A V RENOWN 3439
 S A V BLACKCAP MAY 4136

R R RITO 707
 IDEAL 3407 OF 1418 076
 S A V 8180 TRAVELER 004
 S A V MAY 2397
 S A V BISMARCK 5682
 BAR-E-L MAGNOLIA 143K
 HF EL TIGRE 28U
 HF ECHO 207N

BAR-E-L NATURAL LAW 52Y
PM ECHO 8'16
 HF ECHO 111Y

CE	BW	WW	YW	MILK
0	3.3	65	117	26

- Pasture exposed to HF Entertainer 54H from 5/6/2022 to 7/12/2022.
- Preg checked favourable to PE, due late February



DAM: PM ECHO 8'16



SIRE: S A V RENOWN 3439

Full brother sells on Feb 7th in Pursuit of Excellence Bull Sale.



Lot 9

9

BLAIR'S ECHO 552K

BBC 552K | MAR. 20, 2022 | 2274115

RITO 707 OF IDEAL 3407 7075
S A V RENOWN 3439
 S A V BLACKCAP MAY 4136

BAR-E-L NATURAL LAW 52Y
PM ECHO 8'16
 HF ECHO 111Y

R R RITO 707
 IDEAL 3407 OF 1418 076
 S A V 8180 TRAVELER 004
 S A V MAY 2397
 S A V BISMARCK 5682
 BAR-E-L MAGNOLIA 143K
 HF EL TIGRE 28U
 HF ECHO 207N

CE	BW	WW	YW	MILK
0	3.3	65	117	26

OFFERED BY BLAIRS.AG CATTLE COMPANY & CARLOS OJEA – ARGENTINA

10

KOYLE ECHO 104 X DUFF-JC 4REAL 16250

3 EMBRYOS QUALIFIED FOR CANADA, AUS, USA

DUFF NAPOLEON 232
DUFF-JC 4REAL 16250
 DUFF AMIGO 927K JUANADA 071

S A V AMERICA 8018
KOYLE ECHO 104
 PM ECHO 8'16

DUFF DISTINCTION 9105
 DUFF EUR 443 MERLE 808
 DUFF AMIGO 815
 O C C JUANADA 927K
 S A V PRESIDENT 6847
 S A V MADAME PRIDE 0075
 BAR-E-L NATURAL LAW 52Y
 HF ECHO 111Y

PE	CE	BW	WW	YW	MILK
	3.8	2.5	62	107	20

Stored at Bow Valley Genetics Ltd.



DUFF-JC 4REAL 16250

Koyle Echo 104 is a direct daughter of the past Agribition Supreme Champion cow PM Echo 8'16. Echo 104 was Kylie & Owen's selection out of Opportunity Knocks 2.0. The Echo cow family is known for its power and rib shape along with picture-perfect udders. Echo 8'16 traces back to powerful donors at both Poplar Meadows and Hamilton Farms. Throw in the maternal grandsire Natural Law and you have a real maternal masterpiece. Echo 104 is sired the \$1.5 million SAV America 8018, a bull known to infuse power and performance into his progeny.

These embryos are out of the Duff-JC 4Real bull known to add muscle, length, style and massive rib shape. We have a few calves at home - they are impressive with a ton of capacity and presence. We are very excited about this mating.



Lot 10



Lot 11

11

BLAIR'S BLACKBIRD 733G

BBC 733G | APR. 7, 2019 | 2085819

S A V INTERNATIONAL 2020
S A V NATIONAL ANTHEM 5740
 A C DUKE GIRL 57

S A V HARVESTOR 0338
 S A V EMBLYNETTE 5483
 CAR TRACKER 305
 A C DUKE GIRL 330
 SOO LINE MOTIVE 9016
 SHADY BROOK EVERENTENSE 2039
 O C C JET STREAM 825J
 O C C BLACKBIRD 803P

SOO LINE LOCOMOTIVE 1403
BLAIR'S BLACKBIRD 613C
 O C C BLACKBIRD 720S

CE	BW	WW	YW	MILK
1	2.2	51	88	31

There is a lot to love here as Blackbird 733G is off of Blair's Blackbird 613C which is one of our favorite cows to sell in Opportunity Knocks 1.0 and goes back to our pick of the Limestone dispersal. When you add SAV National Anthem 5740 you get a big time female. National Anthem has done some very good things for us and I can't believe I never got any Canadian semen put up on him. He has sired the likes of the Erica 74A x National Anthem that Hollinger/CSI sold to Kelly Schaff, the top bred heifer from OK 1.0 to SSS/Sunberry Valley and the Blair's Forever Lady 646H that Ter-Ron Farms is showing with extreme success this year.

- Pasture exposed to HF Entertainer 54H from 5/6/2022 to 7/12/2022.
- Preg checked favourable to PE, due early March

Retaining the right to one successful flush at Buyers convenience & sellers expense



DAM: BLAIR'S BLACKBIRD 613C



PATERNAL SIBLING: BESSIE 699G



Lot 12

Featuring
Erica 74A

12

BLAIR'S BLACKBIRD 527K

BBC 527K | MAR. 2, 2022 | 2283142

COLEMAN CHARLO 0256
BLAIR'S MARTIAL LAW 593E
BAR-E-L ERICA 74A

O C C PAXTON 730P
BOHI ABIGALE 6014
BAR-E-L NATURAL LAW 52Y
HF ERICA 339T
S A V INTERNATIONAL 2020
A C DUKE GIRL 57
SOO LINE LOCOMOTIVE 1403
O C C BLACKBIRD 720S

S A V NATIONAL ANTHEM 5740
BLAIR'S BLACKBIRD 733G
BLAIR'S BLACKBIRD 613C

CE	BW	WW	YW	MILK
3	2	54	90	33

This pedigree yells out "bid and don't stop bidding until you own her". I actually get goose bumps when I think about what this female could do in the breed considering what we know about the maternal side of her pedigree and what we have already proven with regards to Blair's Martial Law 593E offspring. Add some Erica 74A influence to your program. My prediction is that some savvy breeder will buy the mother-daughter combo and yes they will come in the ring together.



GRAND-DAM: BAR-E-L ERICA 74A



BLAIR'S TILDA 564H



Lot 13



Featuring
Erica 74A

13

BLAIR'S OAKLEAF 540J

BBC 540J | FEB. 28, 2021 | 2196012

COLEMAN CHARLO 0256

BLAIR'S MARTIAL LAW 593E

BAR-E-L ERICA 74A

SIX MILE DESERT STORM 94D

BLAIR'S OAKLEAF 620F

LOOKOUT OAKLEAF 5W

O C C PAXTON 730P

BOHI ABIGALE 6014

BAR-E-L NATURAL LAW 52Y

HF ERICA 339T

BAR-H CROSSFIRE 63A

SIX MILE FALLING STAR 219Y

DUNLOUISE CORTACHY BOY D137

LOOKOUT OAKLEAF 112T

CE	BW	WW	YW	MILK
3	1.4	45	74	21



PATERNAL SIBLING: BLAIR'S TILDA 564H

Oakleaf 540J is a powerhouse that comes at you from all directions. She is big ribbed, huge middled, with a pedigree to back that up with the great Erica 74A on the top side. 540J was shown successfully last year at the junior level coming out of class each time. Bred for Feb calving to HF Entertainer 54H(Showman) and that mating should be very exciting as our first Entertainer calves are outstanding.

- Pasture exposed to HF Entertainer 54H from 5/24/2022 to 7/12/2022.
- Preg checked favourable to PE, due late February



Lot 14



*Featuring
Erica 74A*

14

BLAIR'S ZARA 518J

BBC 518J | FEB. 22, 2021 | 2196068

COLEMAN CHARLO 0256
BLAIR'S MARTIAL LAW 593E
BAR-E-L ERICA 74A

O C C PAXTON 730P
BOHI ABIGALE 6014
BAR-E-L NATURAL LAW 52Y
HF ERICA 339T
VISION UNANIMOUS 1418
NORTHERN VIEW PRINCESS 103A
CUDLOBE TOTAL FOCUS 6A
DWAJO ZARA 5A

NORTHERN VIEW GRAND SLAM 107D
DWAJO ZARA 45F
DWAJO ZARA 11D

CE	BW	WW	YW	MILK
2.5	2.5	57	99	25

Zara 518J brings you a shot of Erica and a female that deserves your attention. Blair's Martial Law 593E continues to earn respect around the country and we are anxious to see the progeny at Duff Cattle Co. Expect big things from Blair's Zara 518J. She is cool and she is kitten quiet.

- Pasture exposed to HF Entertainer 54H from 5/24/2022 to 7/12/2022.
- Preg checked favourable to PE, due late February



GRAND-DAM: BAR-E-L ERICA 74A



BLAIR'S ZARA 518J



Lot 15

15

WILBAR MAYFLOWER 38J

WJD 38J | FEB. 5, 2021 | 2204282

STEVENSON TURNING POINT
CONLEY SOUTH POINT 8362
 P R LADY 909 4200-587

PLATTEMERE WEIGH UP K360
 STEVENSON PRIDE I167X
 S A V NET WORTH 4200
 P R 587 205-537
 S A V NET WORTH 4200
 BAR-E-L MAGNOLIA 143K
 EARLY SUNSET HIGH TIME 47G
 WILBAR MAYFLOWER 48D

BAR-E-L UNFORGIVEN 102U
WILBAR MAYFLOWER 454Y
 WILBAR MAYFLOWER 731M

CE	BW	WW	YW	MILK
5	1.7	44	79	27

This is a heifer that has been on our radar since last summer as a baby calf. She is exactly the type of female we hoped the South Point daughters would turn into. Massive rib shape, super long spined with that attractive, proud front end everyone gets excited about. Mayflower 38J comes from a very productive line of Mayflower cows. Her dam, 454Y indexes 105 on 10 calves. She weaned one of our top Custom Made sons that will be featured in our 2023 bull sale. 454Y is a daughter of BAR-E-L Unforgiven 102U who is a maternal brother to the great BAR-E-L Natural Law.

Bred to our \$19,000 Wilbar Milestone 48J that shares breeding duties for Riverfront and Westway.

- April 14, 2022: AI to Wilbar Milestone 48J (favourable)
- April 16 to May 31, 2022: Exposed to Remittal F Rainman 2H

Parentage verification covered by Wilbar if needed.



SIRE: CONLEY SOUTH POINT 8362



SERVICE SIRE LOTS 15 & 16: WILBAR MILESTONE 48J



16

WILBAR MAYFLOWER 39J

WJD 39J | FEB. 5, 2021 | 2235516

STEVENSON TURNING POINT
CONLEY SOUTH POINT 8362
 P R LADY 909 4200-587

PLATTEMERE WEIGH UP K360
 STEVENSON PRIDE I167X
 S A V NET WORTH 4200
 P R 587 205-537
 PLAINVIEW LUTTON E102
 CHERRY KNOLL ELSA 8014
 WILBAR TIGERSHARK 420Y
 WILBAR MAYFLOWER 48Z

PLEASANT VALLEY LUTE 1207
WILBAR MAYFLOWER 409E
 WILBAR MAYFLOWER 507B

CE	BW	WW	YW	MILK
6.5	1.8	58	97	29



DAM: WILBAR MAYFLOWER 409E

If you are looking for the front pasture kind, then here is one to consider. Wilbar Mayflower 39J is a beautifully patterned South Point 8362 daughter from our 409E donor cow. Bold ribbed, yet very elegant through her front 1/3, 39J really grabs your attention. The Mayflower cow family has been very productive in the Wilbar herd with multiple donors in production. The dam, 409E is a never miss cow with exceptional udder and foot quality. She is currently indexing 119 on her first 4 calves, ranking her as one of our top cows.

This special sale feature is a flushmate to Wilbar Juncture 45J, our junior herdsire & current show bull. Juncture is fresh off winning the Olds Fall Classic, Lloydminster Stockade RoundUp, a Top 4 Finalist in the Lloyd Supreme and is qualified for the Alberta Supreme at Farm Fair and the Agribition Supreme. A flushmate sold as to Impact Ag Ventures with yet another slated to be featured in our 2023 bull sale. Maternal brothers have sold to Darcy Frankl and Lost River Ranching. 2 additional flushmates are in the replacement pen.

With all that said, we haven't even talked about the exclusive service to Wilbar Milestone 48J. He was our high selling black bull to Riverfront & Westway out of Wilbar Oakleaf 781C (donor and dam of a \$20,000 daughter to Hidden Valley Genetics in Australia)

Full sibling embryos sell as Lot 84.

• April 14, 2022: AI to Wilbar Milestone 48J (favorable)

• April 16 – May 31, 2022: Exposed to Remital F Rainman 2H

Parentage verification covered by Wilbar if needed.



17

BLAIRSWEST BARDELLA 76J

MJNB 76J | FEB. 15, 2021 | 2229796

STEVENSON TURNING POINT
CONLEY SOUTH POINT 8362
 P R LADY 909 4200-587

PLATTEMERE WEIGH UP K360
 STEVENSON PRIDE I167X
 S A V NET WORTH 4200
 P R 587 205-537
 S A V ANGUS VALLEY 1867
 S A V BLACKBIRD 9057
 WIWA CREEK ESCALADE 815'08
 ANNA'S BARDELLA 1U

S A V ANGUS BEEF 3231
PERROT BARDELLA 12C
 ANNA'S BARDELLA 1Z

CE	BW	WW	YW	MILK
6	1.7	58	100	25

Southpoint is a bull that many speak very highly of, and this daughter is one that come sale time will be sure to impress. This super stout black bred is one in terms of power and performance comes to the top easily. 76J came in dam when we purchased Perrot Anna 12 C from the first O.K. 1.0.

We have utilized this cow in our E.T. program and that right there explains how we feel about her. **Parent Verified.**

- AI service to Square B Atlantis on April 30, 2022.
- Pasture exposed to Merit Whiskey 8010 from May 10 to June 21, 2022. Favourable to Whiskey.



SIRE: CONLEY SOUTH POINT 8362



DAM: PERROT BARDELLA 12C

This is cool. 99J is off an Erica x Charlo son (MJNB 28E) we sold to MJT through the Power and Perfection sale at Agribition in 2017 for 21000. We bought Merit Socialite 3048 with MJT and then as a result made some embryos. 99J is a tank that carries a lot of mass, this one is very correct on the ground with a very solid leg structure, Sweeping rib cage with a nice angular shoulder and very attractive skeletal features. We feel 99 may sneak onto your list quite easily come sale time. **Parent Verified**

- AI Bred to Sitz Resilient 10208 on April 30, 2022. Favorable to AI.
- Pasture exposed to Merit Whiskey 8010 from May 10 to June 21, 2022.



SIRE: BLAIRSWEST CHARLO 28E



Lot 18



Featuring Erica 74A

18

BLAIRSWEST SOCIALITE 99J

MJNB 99J | FEB. 28, 2021 | 2287141

COLEMAN CHARLO 0256
BLAIRSWEST CHARLO 28E
BAR-E-L ERICA 74A

BAR-E-L IRON WILL 32Y
MERIT SOCIALITE 3048
MERIT SOCIALITE 2156

O C C PAXTON 730P
BOHI ABIGALE 6014
BAR-E-L NATURAL LAW 52Y
HF ERICA 339T
HF IRON MAN 167W
TIPTOP OF RAINBOW HILLS 51U
MINBURN MAIN EVENT 82K
MERIT SOCIALITE 8054

CE	BW	WW	YW	MILK
-0.5	4	62	106	23

19

WILBAR JENNIFER 86J

WJD 86J | MAR. 12, 2021 | 2235558

BROOKING BANK NOTE 4040
BROOKING REWIND 6023
BROOKING MAUREEN EMILIE 350

WILBAR CAPACITY 99Z
WILBAR JENNIFER 60D
WILBAR JENNIFER 221R

CONNEALY EARNAN 076E
E A ROSE 918 M1F
SITZ RIGHT ANSWER 506Y
SOO LINE MAUREEN EMILIE 0144
PEAK DOT CAPACITY 601W
WILBAR GEORGINA 17P
EARLY SUNSET HIGH TIME 47G
RON'S JENNIFER 74H

CE	BW	WW	YW	MILK
2	1.4	38	59	16



SIRE: BROOKING REWIND 6023

A real powerhouse of a heifer here. Wilbar Jennifer 86J is sired by Rewind, a bull that has left a legacy of big bodied, very productive females for us. They are definitely some of our favorite, top producing cows. The Jennifer line is very maternal, with awesome udder and foot quality. The maternal granddam 221R, weaned a calf this fall at 17 yrs of age. Longevity is bred into these females.

Exciting service to possibly one of the best sons of the great South Point 8362, Wilbar Juncture 45J.

- April 14, 2022: AI to Wilbar Executive Order 835H
 - April 16 – May 31, 2022: Exposed to Wilbar Juncture 45J (early/mid-May breeding)
- Parentage verification covered by Wilbar if needed.



Lot 19

19



Wilbar

Lot 20

20

WILBAR PRIDE 139K

WJD 139K | JAN. 24, 2022 | 2268680

PM EXECUTIVE DECISION 5'17

WILBAR EXECUTIVE ORDER 835H

WILBAR MAYFLOWER 507B

DMM TRADE SECRET 36X

WILBAR PRIDE 561B

WILBAR PRIDE 483Y

BAR-E-L NATURAL LAW 52Y

PM BLOSSOM 124'13

WILBAR TIGERSHARK 420Y

WILBAR MAYFLOWER 48Z

GUMBO GULCH CREED 94S

SOUTHERN OX BLACKBIRD 12J

BAR-E-L UNFORGIVEN 102U

WILBAR PRIDE 407K

CE	BW	WW	YW	MILK
5	1.4	51	85	24

This feature heifer is the first daughter of the \$20,000 Wilbar Executive Order 835H to sell. His first calf crop at Everblack and Wilbar is very exciting. They are very long-bodied with loads of style, hair and presence. 139K is very quiet tempered and would make a competitive junior project. She has been a standout all summer. Her dam is a powerful DMM Trade Secret 36X daughter that is a maternal sister to the \$20,000 Wilbar Cash Out 53D at Minburn. The Pride family is one of our long-running cow families dating back the early 70's. Sells halter broke and junior approved.



GRAND-SIRE: PM EXECUTIVE DECISION 5'17



DAM: WILBAR PRIDE 561B



21

WILBAR BLACK EDNA 110K

WJD 110K | JAN. 13, 2022 | 2268648

STEVENSON TURNING POINT
CONLEY SOUTH POINT 8362
 P R LADY 909 4200-587

PLATTEMERE WEIGH UP K360
 STEVENSON PRIDE I167X
 S A V NET WORTH 4200
 P R 587 205-537
 OSU BLUE CHIP 4230
 LLB IDOLDEE 411Y
 HF KODIAK 5R
 GEIS EDNA 69'08

LLB BLUE CHIP 287E
LLB BLACK EDNA 719H
 GEIS EDNA 50'12

CE	BW	WW	YW	MILK
5	1.7	57	92	19



SIRE: CONLEY SOUTH POINT 8362

What would a Wilbar sale offering be without a South Point heifer? You can't argue the perfect structure and attractive look of the South Point daughters. They are elegant-fronted, big-bodied and super hairy. His first daughters in production this year all had perfect udders, raised big calves and bred back early. 110K has an ultra-cool look with a big body. She is one we seriously considered keeping for ourselves and is certainly one that deserves a show halter. The South Point daughters are making their mark in the show ring this year with the great success of Ryder Wildman's purchase from Opportunity Knocks 2.0. Another SP daughter, Wilbar Blackbird 6J, was senior champion bred heifer in Lloydminster for Madison Goodfellow and Grayden Kay's South Point daughter was senior champion bred heifer at Farmfair. In fact, 3 of the 4 finalists in the senior champion bred heifer class at Farmfair were South Point daughters. 110K might even have a little extra look, going back to Blue Chip on the dam side. Sells halter broke and junior approved.



Lot 22

Blair's Bardella 513K comes to you short on ears and long on future. The Bardella 12C (we call her Anna) donor sold in Opportunity Knocks 1.0 to Blairswest but before we committed her to the sale we did a very strategic flush to McCumber Tribute 702 and wow did it work well. You will love the maternal look to Bardella 513K but wait till you see her soft made powerful brother. If you saw Bardella(Anna) donor in person out on grass you will know that she may be one of the most efficient cows on grass to ever grace the Angus breed. Tribute semen is highly sought after and in a virtual sold out position as he is deceased. Grab hold here and get some Tribute x Anna.



DAM: PERROT BARDELLA 12C

22

BLAIR'S BARDELLA 513K

BBC 513K | FEB. 22, 2022 | 2277830

- MC CUMBER TREMENDOUS 2008
- MC CUMBER TRIBUTE 702**
- LASSIE 113 OF MC CUMBER
- S A V ANGUS BEEF 3231
- PERROT BARDELLA 12C**
- ANNA'S BARDELLA 1Z
- O C C TREMENDOUS 619T
- MISS WIX 2022 HC MC CUMBER
- O C C MISSING LINK 830M
- LASSIE 935 OF MC CUMBER
- S A V ANGUS VALLEY 1867
- S A V BLACKBIRD 9057
- WIWA CREEK ESCALADE 815'08
- ANNA'S BARDELLA 1U

CE	BW	WW	YW	MILK
8.5	0.2	52	94	25

OFFERED BY BLAIRS.AG CATTLE COMPANY & CARLOS OJEA - ARGENTINA

23

WILBAR MAUREEN EMILIE 199K

WJD 199K | MAR. 5, 2022 | 2268717

- LD CAPITALIST 316
- BAR-E-L CUSTOM MADE 53G**
- HF EVENING TINGE 38C
- BROOKING BANK NOTE 4040
- BROOKING MAUREEN EMILIE 7087**
- BAX MAUREEN EMILIE 243-559
- CONNEALY CAPITALIST 028
- LD DIXIE ERICA 2053
- LLB REFLECTION 607A
- HF EVENING TINGE 118Z
- CONNEALY EARNAN 076E
- E A ROSE 918 M1F
- O C C EMBLAZON 854E
- BAX EMILIE ANNA 559-147

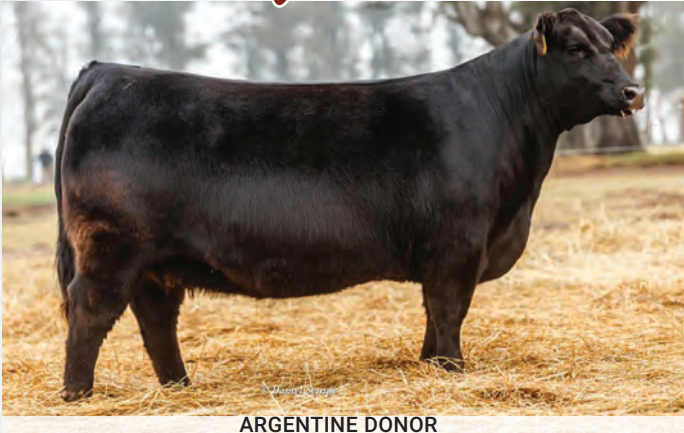
CE	BW	WW	YW	MILK
8	1.6	59	103	22



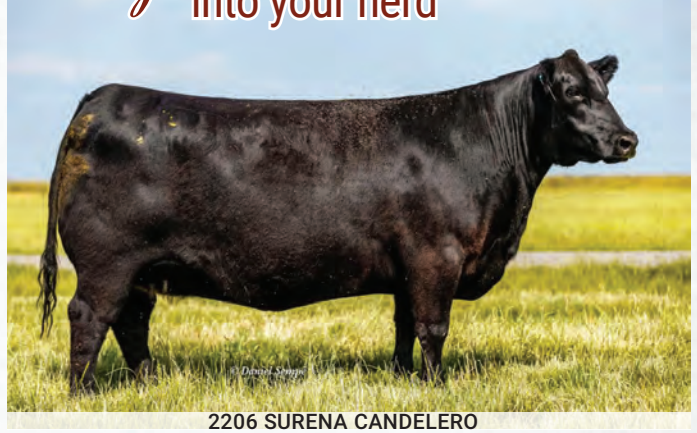
Lot 23

Here is a heifer that will make an outstanding cow. She comes from a long line of very productive females in the Brooking herd. Her dam is a 3/4 sister to our Rewind herd sire who you'll find in many pedigrees of feature lots in our bull sale. The Maureen Emilie cows are big ribbed, deep bodied cows that are standouts in the pasture. Udder quality is excellent. 199K's sire, Custom Made is maybe the best footed bull we've used in a while. He adds extra performance to his progeny with a moderate birth weight. His sons were sale features this past spring including our high seller Wilbar Milestone 48J at \$19,000 to Riverfront and Westway. Sells halter broke and approved for a junior.

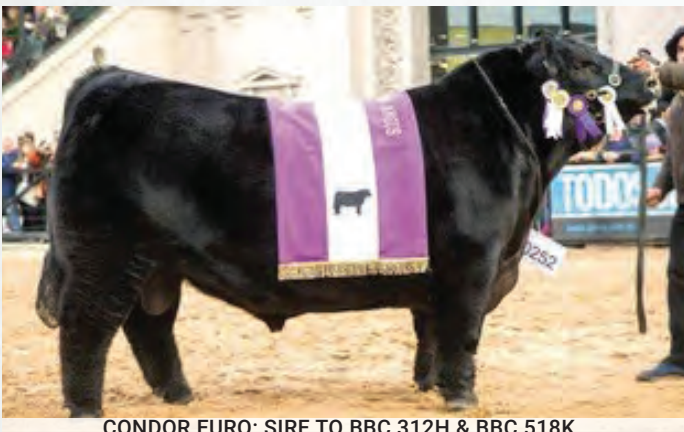
Incorporate
Prestigious Argentine Genetics
 into your herd



ARGENTINE DONOR



2206 SURENA CANDELERO



CONDOR EURO: SIRE TO BBC 312H & BBC 518K



FULL SISTER TO LAFE 2206 SURENA CANDELERO



FULL SISTER TO LAFE 2206 SURENA CANDELERO



ARGENTINE DONOR



Argentine beef genetics are taking the world by storm and astute purebred breeders around North America are taking notice.

Argentine breeders have achieved a long tradition and reputation of breeding cattle that can survive in the real world.

Argentine Angus are very well known around the world as one of the top genetic sources. Their cattle are well known for body capacity, breed quality, fleshing ability, low maintenance, and high fertility.

In the last year, many cattle, born from Argentinian embryos have topped different sales in Canada and United States.

We are excited to play a role introducing and helping to integrate Argentine genetics into the North American Angus gene pool.

Salute to



BLAIR'S 2408

SARITA 547J

the \$100,000 heifer

We are proud of our relationship with Carlos Ojea and his team in Argentina and equally as proud of the progress we have made in identifying genetics that have the most genetic merit to add to the North American Angus gene pool. In 2017 we identified the Blair's 0421 Surena 412D female as a breeding piece that needed to be shared and we offered her at the 2017 Power & Perfection sale at Canadian Western Agribition. We were excited to see the hammer drop at \$34,000 to Kurt Hamburger in Oklahoma and she has since gone on to be one of their top donors. Stay tuned for more news on exciting Blair's 0421 Surena 412D offspring in Oklahoma.

The Opportunity Knocks 2.0 sale on Dec 20th, 2021 will forever go down as a historic day at Blairs.Ag Cattle Company. That was the day we offered the stunning Blair's 2408 Sarita 547J female for the world to evaluate. It was an exciting couple weeks leading up to the sale as the word got out about the unique Argentine breeding piece named "Sarita". She was admired by all that watched her in Regina at Agribition and the admiration carried through to sale week. The hammer fell at \$100,000 (for ½ interest) and we were excited that the successful new owners on Sarita 547J were Ashwood Cattle(Matthew & Cheryl Hughes) - Oklahoma & Hidden Valley Beef(Peter Alexander) – Australia. A special thanks to everyone that participated in attempting to acquire "Sarita" with special thanks to KT Ranches who were runner up and have been a strong supporter of our program.

We continue to identify and develop top Argentine genetics for the North American market and we encourage you to evaluate and make a selection from this years offering to add outcross, efficient made Argentine females to your program. Please take special note of the Blair's 412 Anita 526K & Blair's 2206 Surena 312H females from this offering as we will be retaining an interest in these two females.





Lot 24

24

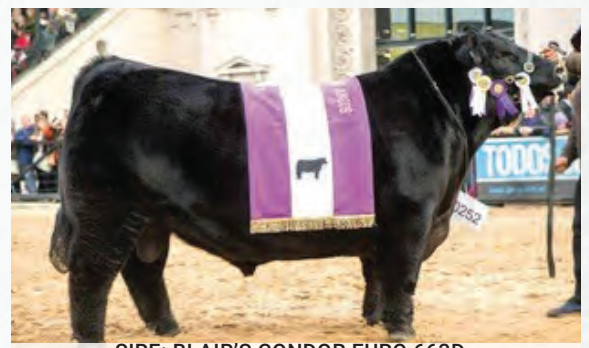
BLAIR'S 412 ANITA 526K

BBC 526K | MAR. 1, 2022 | 2279502

BENJAMIN 1547 ZORZAL LIDER
ERRE TE 383 CONDOR EURO
 ERRE TE 27 GRINGA TOLUCA

FIGARI 27 VIDENTE
DON ROMEO VIDENTE 412
 FIGARI 64 AMAZONA-T/E-

TRES MARIAS 6301 ZORZAL
 LA LEGUA LIDER 8174 BELLE
 RUBETA 3910 GRINGO
 ERRE TE 3241 EXCRIBANA BROMISTA
 LA LEGUA RITMO 8569
 SANTA SERGIA HURONA JINETA 2071
 S A V PIONEER 7301
 PASTORIZA 1026 ANALIA -T/E-



SIRE: BLAIR'S CONDOR EURO 663D

Argentine genetics in North America are gaining popularity and for good reason. We are excited to see who will recognize the value that Blair's Anita 526K will offer the North American Angus gene pool. Anita is a heifer that will hang a halter but more importantly she comes from a successful flush off Don Romeo Anita 412 that has tons of consistency throughout the entire flush. Watch for her flush mate brothers in the Pursuit of Excellence Bull Sale in 2024. Blair's Anita 526K is similar in type to the \$100,000 Blair's Sarita 547J from Opportunity Knocks 2.0 and will deserve your time and attention on sale day. Entered at CWA.

Retaining 50% embryo interest



Lot 25

25

BLAIR'S 2206 SURENA 312H

BBC 312H | APR. 4, 2020 | 2196087

BENJAMIN 1547 ZORZAL LIDER
ERRE TE 383 CONDOR EURO
 ERRE TE 27 GRINGA TOLUCA

TRES MARIAS 8155 CANDELERO
LAFE 2206 SURENA CANDELERO
 HYLINE SURENA 0421

TRES MARIAS 6301 ZORZAL
 LA LEGUA LIDER 8174 BELLE
 RUBETA 3910 GRINGO
 ERRE TE 3241 EXCRIBANA BROMISTA
 DON JOSE 176 MAXI
 TRES MARIAS 7358 LA ANDRIA
 S A V 004 DENSITY 4336
 SURENA 478 QUEEN EBONETTE XPL



BLAIR'S SURENA 312H

This cow family is responsible for producing the famous Argentine bull Zorzal. If you believe in cow families like we do, have a serious look at the credentials here. Blair's Surena 412D(maternal sib) sold in 2017 CWA Power & Perfection sale at \$34,000 to Kurt Hamburger, Weatherford OK and is a donor in their ET program.

- Pasture exposed to HF Entertainer 54H from 5/6/2022 to 7/12/2022
- Preg checked favourable to PE due late March

Retaining the right to one successful flush at Buyers convenience & sellers expense



MATERNAL SISTER: BBC 412H

26

BLAIR'S 14 SILVIA 518K

BBC 518K | FEB. 22, 2022 | 2274134

BENJAMIN 1547 ZORZAL LIDER
ERRE TE 383 CONDOR EURO
ERRE TE 27 GRINGA TOLUCA

RUBETA 4980 BOMBAZO
POKER 14 BOMBA LOCA T/E
APAMPADO 96

TRES MARIAS 6301 ZORZAL
LA LEGUA LIDER 8174 BELLE
RUBETA 3910 GRINGO
ERRE TE 3241 EXCRIBANA BROMISTA
O C C HEADLINER 661H
RUBETA 3414 BOMBA
NICHOLS PERFORMA D162
BLACK PRINCESS 9446 LASS

OFFERED BY BLAIRS.AG CATTLE COMPANY & CARLOS OJEA – ARGENTINA



CARLOS OJEA

The Angus industry has been searching for outcross genetics for decades and we are proud of our partnership with Carlos Ojea in Argentina and our mutual goal to import genetics that will compliment the current North American gene pool. Make this the year you step out and add some Argentine genetics to your program. See you on Dec 19th.



Lot 26

27

BLAIR'S 259 VICKY 1566J

BBC 1566J | MAR. 24, 2021 | 2236065

DON JOSE 176 MAXI
DON APARICIO SERRUCHO 57 MAXI
DON APARICIO SERRANIAS 57 BISMARCK

S A V BRAVE 8320
NERA'S 259 HYL 0253 BRAVE T/E
HYLINE FREEDOM 0253 -T/E-

O C C HEADLINER 661H
TRES MARIAS 6204 HORNERO 5314
S A V BISMARCK 5682
DON APARICIO 15 SERRANA NETWORKH
S A V MANDAN 5664
S A V MAY 2397
TC FREEDOM 104
RUBETA VICKY 4351 RENATA -T/E-

CE	BW	WW	YW	MILK
	3.2	25	46	20

OFFERED BY BLAIRS.AG CATTLE COMPANY & CARLOS OJEA – ARGENTINA

- Pasture exposed to HF Entertainer 54H from 5/24/2022 to 7/12/2022.
- Preg checked favourable to PE, due late February



Lot 27

28

BLAIR'S 259 VICKY 557J

BBC 557J | MAR. 16, 2021 | 2245695

DON JOSE 176 MAXI
DON APARICIO SERRUCHO 57 MAXI
DON APARICIO SERRANIAS 57 BISMARCK

S A V BRAVE 8320
NERA'S 259 HYL 0253 BRAVE T/E
HYLINE FREEDOM 0253 -T/E-

O C C HEADLINER 661H
TRES MARIAS 6204 HORNERO 5314
S A V BISMARCK 5682
DON APARICIO 15 SERRANA NETWORKH
S A V MANDAN 5664
S A V MAY 2397
TC FREEDOM 104
RUBETA VICKY 4351 RENATA -T/E-

CE	BW	WW	YW	MILK
	2.1	28	51	21

OFFERED BY BLAIRS.AG CATTLE COMPANY & CARLOS OJEA – ARGENTINA

The 259 Vicky full sisters are paternal sisters to both Hummel South America & Hummel Argentina that have created such a stir in the recent Coleman Angus sale with daughters selling as sale features. The 259 Vicky cow family is well known in Argentina and we believe these heifers best days are in front of them. Buy yourself some outcross Argentine genetics at a time when outcross genetics are highly sought after. Full brother sells on Feb 7th in Pursuit of Excellence Bull Sale.

- Pasture exposed to HF Entertainer 54H from 5/24/2022 to 7/12/2022.
- Preg checked favourable to PE due late February



PATERNAL SIBLING TO LOTS 27 & 28: HUMMEL SOUTH AMERICA



Flush Lot

Lot 29

29

RED DOUBLE B LARKABA 9010

BAX 10G | MAR. 7, 2019 | 2090711

DKF ELIMINATOR 15A
RED DKF RAZOR 55C
 DKF MISS NET WORTH 21A

RED WHEEL GANGSTER 31Y
RED BLAIR'S LARKABA 42A
 RED BLAIRS LARKABA 101Y

S A V ELIMINATOR 9105
 RED DKF MISS POWER 17P
 S A V NET WORTH 4200
 DKF MISS POWER UP 95X
 RED SVR GANGSTER 14S
 BLACK WHEEL COUNTESS 69S
 RINGSTEAD DAWSON 717T
 RED BLAIR'S LARKABA 17T

CE	BW	WW	YW	MILK
-2.5	3.2	41	71	28



DAM: RED BLAIR'S LARKABA 42A



MAT. BROTHER: RED DOUBLE B LUCKY STRIKE 9001



MATERNAL SISTER: BAX 16K LOT 32



CJA 2022: RED DOUBLE B LARKABA 9010

Every once in a while, there comes a female that encompasses everything you strive to produce in your program and more. For us, that's Larkaba 9010. Being the first-ever daughter out of our 42A donor, she had big shoes to fill, but man did she do it. Striking, massive bodied, stout, and huge legged, while somehow still being ultra flexible, fresh, and perfect in her udder design as a mature cow. She went undefeated as a pair this summer with her Red Wood son, was recently named Reserve Champion Red Angus female at the 2022 Lloyd Stockade Roundup, and will be exhibited at Canadian Western Agribition. We couldn't let ourselves part with our most exciting donor prospect out right, but after many inquiries, we are thrilled to offer a rare opportunity and see her genetics bump up the pace in any genetic arsenal. **Guaranteeing a minimum of 6 embryos with no cap.**

The buyer is responsible for all costs associated with the flush, including the semen.



STOCKADE 2022: RED DOUBLE B LARKABA 9010

Trump daughters have dominated the show ring for their big-time presence, proportions, and power, so when mated to our cornerstone 42A donor, we weren't surprised that these twin daughters fit the bill. Larkaba 205 is wicked looking, big-bellied, and stout as they come all the way to the surface. Throw in her disposition and hard-to-come-by pedigree, this one's show and production potential are endless.



DAM: RED BLAIRS LARKABA 42A



SIRE: RED DAMAR TRUMP C512



30

RED DOUBLE B LARKABA 205

BAX 5K | FEB. 10, 2022 | ?342307

RED SOO LINE POWER EYE 161X
RED DAMAR TRUMP C512
 RED DAMAR OH BABY W168

RED WHEEL GANGSTER 31Y
RED BLAIRS LARKABA 42A
 RED BLAIRS LARKABA 101Y

RED COCKBURN RIBEYE 308U
 RED TR LYNN 301R
 RED FINE LINE MULBERRY 26P
 RED T-S OLIVIA 706P
 RED SVR GANGSTER 14S
 BLACK WHEEL COUNTESS 69S
 RINGSTEAD DAWSON 717T
 RED BLAIR'S LARKABA 17T

PE	CE	BW	WW	YW	MILK
6.0	0.3		26	44	25



DAM: RED BLAIR'S LARKABA 42A



SIRE: RED DAMAR TRUMP C512

To put it simply; she got it from her momma. 42A never misses with her progeny regardless of how she's taken, so when 206 inherited all her dam's mass, body, and power with those dark cherry hairs and a skeleton that's built for the long haul, you can't help but get excited.

31

RED DOUBLE B LARKABA 206

BAX 6K | FEB. 10, 2022 | ?342310

RED SOO LINE POWER EYE 161X
RED DAMAR TRUMP C512
 RED DAMAR OH BABY W168

RED WHEEL GANGSTER 31Y
RED BLAIRS LARKABA 42A
 RED BLAIRS LARKABA 101Y

RED COCKBURN RIBEYE 308U
 RED TR LYNN 301R
 RED FINE LINE MULBERRY 26P
 RED T-S OLIVIA 706P
 RED SVR GANGSTER 14S
 BLACK WHEEL COUNTESS 69S
 RINGSTEAD DAWSON 717T
 RED BLAIR'S LARKABA 17T

PE	CE	BW	WW	YW	MILK
6.0	0.3		26	44	25



Lot 31



Lot 32

32

RED DOUBLE B LARKABA 216

BAX 16K | FEB. 16, 2022 | 2290273

RED SLGN WIDELoad 920W
RED MANN RED BOX 55C
 RED PELTON MISS AJA 0839U

RED WHEEL GANGSTER 31Y
RED BLAIR'S LARKABA 42A
 RED BLAIRS LARKABA 101Y

RED UBAR HIGH CAPACITY 224
 RED MEADO-WEST PERSUASION
 RED 5L NORSEMAN KING 2291
 RED PELTONS MISS IDA 0547R
 RED SVR GANGSTER 14S
 BLACK WHEEL COUNTESS 69S
 RINGSTEAD DAWSON 717T
 RED BLAIR'S LARKABA 17T

PE	CE	BW	WW	YW	MILK
	-1.0	3.0	35	63	25

There's livestock in every species that bring unique intangibles to the table that stop you dead in your tracks...216 is one of them. If you've seen her mother's track record, you'll know why Larkaba 42A will never leave our program. So when this Red Box daughter comes with this much body, bone, and stoutness, all while having the big dark cherry hairs Red breeders are envious of, I'm going to be honest - I'm not sure why we're selling her.

Retaining 50% embryo interest



DAM: RED BLAIR'S LARKABA 42A



MAT. BROTHER: DOUBLE B LUCKY STRIKE 9001



MAT. BROTHER: DOUBLE B BACKROAD 2C



MAT. BROTHER: DOUBLE B 6M AUTOGRAPH 2D



33

RED DOUBLE B LARKABA 223

BAX 23K | FEB. 17, 2022 | 2288338

RED DUFF CORNERSTONE 16136
RED DUFF RED WOOD 1941
 DUFF DIXIE ERICA 144 1532
 RED WHEEL GANGSTER 31Y
RED BLAIR'S LARKABA 42A
 RED BLAIRS LARKABA 101Y

RED BLAIR'S BINGO 581B
 DUFF JUANADA 927K 246
 RED WCR HAMMELECH 812Z
 DUFF BI 505 DIXIEERICA 144
 RED SVR GANGSTER 14S
 BLACK WHEEL COUNTESS 69S
 RINGSTEAD DAWSON 717T
 RED BLAIR'S LARKABA 17T

PE	CE	BW	WW	YW	MILK
	2.0	2.2	30	47	23

42A's progeny are always standouts for their rib shape, fleshing ability, and sheer muscle, but 223 is unique. Talk about a neck that goes for miles, a flawless skeleton, and a balanced look all while having the body and power from the bottom side of her pedigree that's been proven to excel long-term. 223 is one of the first Duff Red Wood daughters to sell in Canada, and if they keep putting this many next-level pieces together, it may be one of the last we let go of, also.

Retaining the right to one successful future flush at the buyers convenience and the sellers expense



DAM: RED BLAIR'S LARKABA 42A



MAT. SIB: RED DOUBLE B LARKABA 9010



MAT. SISTER: RED DOUBLE B LARKABA 124



Lot 34

34

RED BLAIR'S KURUBA 134J

BBC 134J | MAR. 8, 2021 | 2195979

RED SIX MILE GAME FACE 164Y
RED TWG TOMMY JACK 166A
 RED DAMAR PASSION X166

RED DAMAR DOCTOR C501
RED BLAIR'S KURUBA 14F
 RED BLAIR'S KARGO 77A

RED VGW GAME PLAN 816
 RED SIX MILE LAKOTO 35W
 RED FINE LINE MULBERRY 26P
 RED DFRA JOPLIN 501L
 RED SOO LINE POWER EYE 161X
 RED DAMAR OH BABY W168
 RED RINGSTEAD KARGO 215U
 RED BLAIRS KURUBA 212Y

CE	BW	WW	YW	MILK	BOLT	CE	BW	WW	YW	MILK
1	3.4	43	73	20	EPDS	8.9	0.6	65	100	23

Red Blair's Kuruba 134J and her maternal sister Red Blair's Kuruba 101K sell in OK 3.0. You will really admire their phenotype and docility. Tommy x Power Eye/Kargo screams maternal with moderate calving ease.

- Ai'd to Duff Red Blood 18114 on 5/19/2022.
- Pasture exposed to BMRA Mr Detour 020 from 5/24/2022 to 6/16/2022 then exposed to Red Blair's Renown 32G from 6/17/2022 to 7/12/2022
- Preg checked favourable to PE, due late March

35

RED BLAIR'S KURUBA 14F

BBC 14F | MAR. 30, 2018 | 2032266

RED SOO LINE POWER EYE 161X
RED DAMAR DOCTOR C501
 RED DAMAR OH BABY W168

RED RINGSTEAD KARGO 215U
RED BLAIR'S KARGO 77A
 RED BLAIRS KURUBA 212Y

RED COCKBURN RIBEYE 308U
 RED TR LYNN 301R
 RED FINE LINE MULBERRY 26P
 RED T-S OLIVIA 706P
 RED RINGSTEAD KARGO 107M
 RED RINGSTEAD MS EQUAL 589P
 RED FINE LINE MULBERRY 26P
 RED GOLDEN DAWN KURUBA 24L

CE	BW	WW	YW	MILK
5.0	2.0	39	67	18

Kuruba 14F is a proven female that comes in a super cool package. She will be easy to find on sale day. Her daughter sells as Lot 34 & Lot 36. Very rare to have the chance to buy from a mother and two daughters combo with the extreme quality that this family exhibits.

- Ai'd to Red Blair's Blind Spot 558H on 5/19/2022.
- Pasture exposed to Cockburn Arsenal 8001 from 5/24/2022 to 6/27/2022.
- Preg checked favourable to PE, due mid-March



SIRE: RED DAMAR DOCTOR C501



Lot 36

36

RED BLAIR'S KURUBA 101K

BBC 101K | FEB. 18, 2022 | 2259709

RED RINGSTEAD KARGO 107M
RED RINGSTEAD KARGO 215U
 RED RINGSTEAD MS EQUAL 589P

RED COMPASS KARGO 83K
 RED GET-A-LONG MRS. YOUNG 095
 RED SSS YUKON 440K
 RED SSS MISS EQUAL 495G
 RED SOO LINE POWER EYE 161X
 RED DAMAR OH BABY W168
 RED RINGSTEAD KARGO 215U
 RED BLAIRS KURUBA 212Y

RED DAMAR DOCTOR C501
RED BLAIR'S KURUBA 14F
 RED BLAIR'S KARGO 77A

CE	BW	WW	YW	MILK	BOLT	CE	BW	WW	YW	MILK
11	-0.1	39	62	20	EPDS	14.9	-2.6	56	87	24

Red Blair's Kuruba 101k is a joy to be around and is that deep sided, soft haired, deep flanked kind that every 4-H kid should show. Kargo 215U has proved his value over and over and you will really see the value in this heifer when she drops down an udder and becomes a front pasture cow.



SIRE: RED RINGSTEAD KARGO 215U



PATERNAL SIBLING: RED BLAIR'S KARGO 562D



Wilbar
Lot 37

37

RED WILBAR BRNDINA 14K

WJD 14K | JAN. 21, 2022 | 2268392

RED WILBAR CRACKERJACK 73F
RED WILBAR TEMPO 625H
RED WILBAR REBECCA 858Z

RED PIE SPECIALIST 430
RED WILBAR SUE 51A
RED TER-RON RELOAD 703T
RED WILBAR REBECCA 44U
RED LAZY MC HUSTLE 18T
RED WILBAR CORA 443P
RED PIE GAME ON 9109
RED WILBAR BRNDINA 617Y

RED WILBAR BACKSTOP 392B
RED WILBAR BRNDINA 152D
RED WILBAR BRNDINA 315B

CE	BW	WW	YW	MILK
4	0.4	38	62	25

The first daughter of the \$28,000 Red Wilbar Tempo 625H to sell. We wanted to offer our best representative from this sire and 14K is exactly that. Tempo stamps his calves with exceptional foot quality, bold body shape, attractive presence, moderate birth weight and cherry red hair coats. The combination of Crackerjack and Reload certainly infuses a genetic punch. 14K is much like her dam and typical of the Brndina females. Massive middled and very easy-doing. The kind that can produce and look good doing it.

Retaining the right to one successful flush at the buyers convenience and the sellers expense

This heifer is halter broke and junior approved. Will be shown at Canadian Western Agribition.



SIRE: RED WILBAR TEMPO 625H



DAM: RED WILBAR BRNDINA 152D



38

RED WILBAR BRNDINA 30K

WJD 30K | JAN. 29, 2022 | 2268395

RED NCJ COMING IN HOT 24E
RED WILBAR HIGHLIGHT 624H
 RED WILBAR DOLL 776C

PM EXECUTIVE DECISION 5'17
WILBAR BRNDINA 517G
 RED WILBAR BRNDINA 617Y

RRA AVIATOR 507
 RED NCJ MINERVA 35C
 RED WILBAR SPEED 32A
 RED LAZY MC DOLL 25R
 BAR-E-L NATURAL LAW 52Y
 PM BLOSSOM 124'13
 RED WILBAR REPLICIA 836T
 RED WILBAR BRNDINA 638S

CE	BW	WW	YW	MILK
-1	3.1	47	85	23

Sale Feature. We are very excited and possibly a little crazy to offer you this stunning dark red, outcross female. Once again coming from the Brndina line of cows (there's a lot of them), 30K has WOW factor on paper and in the pasture. Sired by our Power bull Highlight, a Coming In Hot son that has definitely stamped his calves with his extra body, dense bone structure along with possibly the best feet we've seen on Red Angus. Her dam is a beautiful, black daughter of maybe the best son of the famous BAR-E-L Natural Law...PM Executive Decision. This is only her second calf. Her first is another beautiful red female by Red Blood, one of our favorite replacement heifers. She joined our team of donors this spring and can't wait to show you the results next year. Take advantage of these rare outcross genetics, as they won't be offered for sale very often. Sells halter broke and junior approved.

Retaining the right to one successful flush at the buyers convenience and the sellers expense



SIRE: RED WILBAR HIGHLIGHT 624H



MGS: PM EXECUTIVE DECISION 5'17



SIRE: RED PIE QUARTERBACK 0814



DAM: RED WILBAR BRNDINA 53F

39

RED WILBAR SBV BRNDINA 58K

WJD 58K | FEB. 17, 2022 | 2268416

RED PIE QUARTERBACK 789
RED PIE QUARTERBACK 0814
 RED C-BAR ABIGRACE 636D

RED PIE SPECIALIST 430
RED WILBAR BRNDINA 53F
 RED WILBAR BRNDINA 638S

RED PIE STOCKMAN 4051
 RED PIE RUBY 520
 SPUR FRANCHISE OF GARTON
 RED C-BAR ABIGRACE Y11
 RED LSF SAGA 1040Y
 RED PIE PLAYMATE 232
 RED TER-RON TORNADO 157M
 RED LAZY MC BRNDINA 15E

CE	BW	WW	YW	MILK
10	-2.1	35	66	27

One of the first daughters offered from our new outcross sire, the \$50,000 PIE Quarterback 0814. His first calves are soft made with lots of rib shape, really cool fronts with very traditional Angus heads all in a moderate framed package. We feel these Quarterback daughters are going to mature into ideal females that you'll wish you had a whole herd of. Adding to these new genetics, Quarterback's dam is a flush mate to the \$105,000 9 Mile Franchise bull at Select Sires. C-BAR Abigrace 638D was Pieper's pick of the herd flush from the well-known C-BAR herd in Kansas. 58K's dam is a perfect uddered donor cow who was crowned 2020 Miss North America in the breeders.net competition. Once again from our very productive Brndina cow family. Watch for a very good Township brother selling in 2023.

Halter broke and junior approved. Extremely quiet. Would be safe for a beginner 4-H project.

Owned with Sunberry Valley Ranch.

40

RED DOUBLE B DARLENE 229

BAX 29K | FEB. 28, 2022 | 2290275

RED DUFF CORNERSTONE 16136
RED DUFF RED WOOD 1941
 DUFF DIXIE ERICA 144 153

RED U-2 RENOWN 193C
RED BLAIRS DARLINE 56G
 RED TOWAW DARLINE 15R

RED BLAIR'S BINGO 581B
 DUFF JUANADA 927K 246
 RED WCR HAMMELECH 812Z
 DUFF BI 505 DIXIEERICA 144
 RED U-2 RECKONING 149A
 RED U-2 ENVIOUS 147X
 RED SVR TALLY 13M
 RED MOUNTAIN ASH DARLINE 6K

Darlene 56G was our pick of the red-bred heifers in the first-ever Opportunity Knocks sale in 2020. Fast forward to today, there may not be another female being offered with her daughter's mass and sheer power. Darlene 229 is massive footed, huge bellied, and big pinned, while still being sharp and attractive upfront. So yes, she'll certainly have some fun in the ring, but I'd be even more excited to see what she can do as a breeding piece.



BAX 29K DAM: RED BLAIRS DARLINE 56G





41

RED BLAIRSWEST MARTA 17K

MJNB 17K | JAN. 27, 2022 | 2284482

RED U-2 RECKONING 149A
RED SIX MILE JOHN WICK 882E
 RED SIX MILE & CO GLORIA 29A

RED U-2 RECON 192Y
 RED U-2 ANEXA 271Y
 RED 6 MILE FULL THROTTLE 171T
 RED SIX MILE GLORIA 746W
 STEWART'S PRIMUS 52R
 RED SVR FAYE 5M OSF MAF
 RED YY RED KNIGHT 640F
 RED MAPLE ACRES MARTA 8B

RED SIX MILE WIND CHILL 828W
RED SIX MILE MARTA 300Y
 RED BAR-E-L MARTA 39H

CE	BW	WW	YW	MILK	BOLT	CE	BW	WW	YW	MILK
3.5	1.9	47	77	32	EPDS	13.6	-0.6	61	90	32

This John Wick x Marta 300Y daughter is one that we think is in the upper echelon of our heifer calf crop. One of this quality is hard to part with as she is very stylish up front while having ample amounts of middle and being super stout and moves like a cat. 300Y is a CAA elite dam and has a lot of notable bulls down at 6M such as Durant who went to Sunberry Valley for 31000 and Brunson to Triple Play Cattle for 30000. John Wick is only gaining more accolades siring multiple national champions and high sellers across North America. Check her out at Canadian Western Agribition.

Parent Verified.

Retaining the right to one successful future flush at the buyer's convenience and the seller's expense



SIRE: RED SIX MILE JOHN WICK 882E



DAM: RED SIX MILE MARTA 300Y



42

RED BLAIR'S DM RHONDA 105K

BBC 105K | FEB. 22, 2022 | 2259756

RED SOO LINE POWER EYE 161X
RED DAMAR TRUMP C512
 RED DAMAR OH BABY W168

RED COCKBURN RIBEYE 308U
 RED TR LYNN 301R
 RED FINE LINE MULBERRY 26P
 RED T-S OLIVIA 706P
 RED RINGSTEAD KARGO 107M
 RED RINGSTEAD MS EQUAL 589P
 RED CRESCENT CREEK FRCHIEF 75L
 RED GEIS RHODA 176'99

RED RINGSTEAD KARGO 215U
RED BLAIR'S RHONDA 30E
 RED SOO LINE RHONDA 5109

CE	BW	WW	YW	MILK	BOLT	CE	BW	WW	YW	MILK
0	3.7	43	70	23	EPDS	12.7	-0.6	54	83	28

A fan favorite here on this big ribbed, great haired Damar Trump daughter off the Red Blair's Rhonda 30E female that Dale McKay purchased in one of our Genetic Focus sales. Watch for a Rhonda 30E grandson to be a feature outcross two year old bull in our 2024 bull sale. The 30E female has not missed and Dale has retained a full sister to Rhonda 105K to add to his stable of top quality females which also include the Blair's Echo 270F which was the calf at side of the 2018 RBC Supreme Champion Female. Entered at CWA.



DAM: RED BLAIR'S RHONDA 30E



FULL SISTER TO DAM: RED BLAIR'S RHONDA 29E

OFFERED BY BLAIRS.AG CATTLE COMPANY & DALE MCKAY.



43

RED BLAIR'S RHONDA 29E

BBC 29E | APR. 9, 2017 | 1999599

RED RINGSTEAD KARGO 107M
RED RINGSTEAD KARGO 215U
 RED RINGSTEAD MS EQUAL 589P

RED CRESCENT CREEK FRCHIEF 75L
RED SOO LINE RHONDA 5109
 RED GEIS RHODA 176'99

RED COMPASS KARGO 83K
 RED GET-A-LONG MRS. YOUNG 095
 RED SSS YUKON 440K
 RED SSS MISS EQUAL 495G
 RED FORSTER CHIEF 7182ET
 RED CRESCENT CREEK DUCHESS 155
 RED CR 17 PROOF 96G
 RED GEIS RHODA 35'93

CE	BW	WW	YW	MILK	BOLT	CE	BW	WW	YW	MILK
2	3.9	41	62	22	EPDS	11.9	-0.7	48	71	24

The impact Red Ringstead Kargo 215U has had across North America is very satisfying. The daughters are great mothers with excellent udders and the bulls are moderate calving ease with excellent testicular development and the perfect amount of internal dimension. The SooLine Rhonda 109R female has been popular since she sold in the SooLine dispersal and has produced Blair's Rhonda 30E(owned by Dale McKay) and Blair's Rhonda 29E selling in OK 3.0. 29E is blood red, big ribbed, big hiped and comes with a great udder. We are committed to the highest level of quality in the Opportunity Knocks Sale so we have decided to offer Rhonda 29E for sale.

- Ai'd to Red Blair's Blind Spot 558H on 5/19/2022.
- Preg checked favourable to AI due late February
- Pasture exposed to Cockburn Arsenal 8001 from 5/24/2022 to 6/16/2022

Retaining the right to one successful flush at Buyers convenience and the sellers expense



FULL SISTER: RED BLAIR'S RHONDA 30E



FULL SISTER: RED BLAIR'S DM RHONDA 105K



PATERNAL SISTER: RED BLAIR'S MONIQUE 522C



Lot 44

44

RED BLAIR'S DARLINE 565B

BBC 565B | FEB. 26, 2014 | 1819754

LAF LINS CUTTING EDGE 2075
RED HAYCOW CUTTING EDGE 055
 RED HAYCOW 370 PRINCESS 5002

W C NORTHERN EDGE 0C04
 LAF LINS QUEEN JULIET 713
 RED JLG FREIGHT LINER 362
 RED JLG PRINCESS JR 107 370
 RED SOUTH VIEW NO EQUAL 28H
 RED SOUTH VIEW LADY RAB 6G
 RED BUF CRK HOB0 1961
 RED TYEE DARLINE 9D

RED SVR TALLY 13M
RED TOWAW DARLINE 15R
 RED MOUNTAIN ASH DARLINE 6K

CE	BW	WW	YW	MILK	BOLT	CE	BW	WW	YW	MILK
7	0.2	28	40	14	EPDS	12.7	-1.6	44	60	19

If you are searching for a red donor, give this one some serious thought and take her into consideration. This big bellied, stout Haycow Cutting Edge daughter is one that offers serious power in a very attractive package. This is the dam to the highly competitive MJNB 33H red bred that we took out last fall and had great success with as she sold in the Opportunity Knocks 2.0 for 25k to Niobrara Red Angus in Nebraska. Darline has done it again on this Revival heifer calf and is carrying a service to Red Duff Red Bear. What a great way to get a return on your investment with this cow that you are only going to see more of if you are the lucky buyer.

Owned with Leslie Westman, Westman Farms.

Parent verified

- Al'ed May 7th to Red Duff Red Bear (Favourable), due February 13, 2023.
- Pasture exposed to Red U2 Revival May 10, 2022 to June 10, 2022.



DAM: RED TOWAW DARLINE 15R



DAUGHTER: RED BLAIRSWEST DARLINE 33H



SIRE: RED HAYCOW CUTTING EDGE 055



Lot 45

45

RED BLAIRSWEST DARLINE 56K

MJNB 56K | FEB. 17, 2022 | 2282510

RED MRLA RESOURCE 137E
RED U2 REVIVAL 147G
 RED U-2 BELA 8200U

MRLA RELOAD 56C
 MRLA MISS 4422B
 RED U-2 BIG LEAGUE 544R
 RED U-2 BELA 934J
 LAF LINS CUTTING EDGE 2075
 RED HAYCOW 370 PRINCESS 5002
 RED SVR TALLY 13M
 RED MOUNTAIN ASH DARLINE 6K

RED HAYCOW CUTTING EDGE 055
RED BLAIR'S DARLINE 565B
 RED TOWAW DARLINE 15R

CE	BW	WW	YW	MILK	BOLT	CE	BW	WW	YW	MILK
3	1.6	37	55	16	EPDS	10.1	-0.3	57	80	23

This February Revival heifer calf is one that is very well put together and has the pieces to follow in her dam's footsteps. This heifer has caught the attention of many who have toured and for good reason. Talk about structure, quality, depth of body and an attractive front, with time she will be very competitive, and the proof is in the pudding in terms of donor quality. This one is sure to have a star by her on the 19th of December. The first and only Revival to sell this year.

Owned with Leslie Westman, Westman Farms.
 Parent verified.



SIRE: RED U2 REVIVAL 147G



HALF SISTER: RED BLAIRSWEST DARLINE 33H



Lot 46

46

RED BLAIR'S YANKEE 112J

BBC 112J | FEB. 23, 2021 | 2201401

RED SLGN WIDELOAD 920W
RED MANN RED BOX 55C
 RED PELTON MISS AJA 0839U

RED BRYLOR/WSP KARWEIK 1P
RED WSF MS YANKEE 13T 12W
 RED FINE LINE YANKEE 13T

RED UBAR HIGH CAPACITY 224
 RED MEADO-WEST PERSUASION
 RED 5L NORSEMAN KING 2291
 RED PELTONS MISS IDA 0547R
 RED NORTHLINE ROB ROY 122K
 RED DMM MISS ESSENCE 58M
 RED FINE LINE MULBERRY 26P
 RED FINE LINE YANKEE 14R

CE	BW	WW	YW	MILK
-1.5	3.4	49	86	22

BOLT	CE	BW	WW	YW	MILK
EPDS	8.7	1.5	65	103	18

Red Blair's Yankee 112J is a female that has been a favourite around here since she was very young. She was part of the "choice lot" at Red Roundup in 2021 and we are excited to feature her in Opportunity Knocks 3.0. She will be part of our 2022 CWA show team and we think you will appreciate her when you see her in person. The Red Box influence is evident in OK 3.0 but also around North America. Yankee 112J comes off the extremely popular and influential \$75,000 WSF Yankee 12W. Four (4) full sisters off Yankee 12W sell in this years sale. Full sisters to Yankee 112J sell as Lots 47, 48 & 49.

- Ai'd to Duff Red Blood 18114 on 5/19/2022.
- Preg checked favourable to AI, due Late February
- Pasture exposed to BMRA Mr Detour 020 from 5/24/2022 to 6/16/2022 then exposed to Red Blair's Renown 32G from 6/17/2022 to 7/12/2022

Retaining the right to one successful flush at the buyers convenience and the sellers expense



FULL SISTERS: RED BLAIR'S YANKEE 119K



DAM: RED BLAIR'S YANKEE 129K



SIRE: RED MANN RED BOX 55C



Lot 47

47

RED BLAIR'S YANKEE 119K

BBC 119K | MAR. 16, 2022 | 2269170

RED SLGN WIDELOAD 920W
RED MANN RED BOX 55C
 RED PELTON MISS AJA 0839U

RED BRYLOR/WSP KARWEIK 1P
RED WSF MS YANKEE 13T 12W
 RED FINE LINE YANKEE 13T

RED UBAR HIGH CAPACITY 224
 RED MEADO-WEST PERSUASION
 RED 5L NORSEMAN KING 2291
 RED PELTONS MISS IDA 0547R
 RED NORTHLINE ROB ROY 122K
 RED DMM MISS ESSENCE 58M
 RED FINE LINE MULBERRY 26P
 RED FINE LINE YANKEE 14R

CE	BW	WW	YW	MILK	BOLT	CE	BW	WW	YW	MILK
-1.5	3.7	46	83	22	EPDS	8.7	1.5	64	102	18

Take a look here! Study this picture, study the pedigree and then just imagine what the future might hold. We have a very high level of confidence in this heifer and this mating and it's evident by the fact that we are retaining an embryo interest in Red Blair's Yankee 119K, Red Blair's Yankee 129K and their full sister Red Blair's Yankee 112J. Watch for these females to anchor our red division of our ET program.

Entered at CWA.
 Retaining 50% embryo interest



MATERNAL SIBLING: RED BLAIR'S YANKEE 28B



MATERNAL SIBLING: RED BLAIR'S YANKEE 585D



48

RED BLAIR'S YANKEE 129K

BBC 129K | MAR. 19, 2022 | 2269157

RED SLGN WIDELoad 920W
RED MANN RED BOX 55C
 RED PELTON MISS AJA 0839U

RED BRYLOR/WSP KARWEIK 1P
RED WSF MS YANKEE 13T 12W
 RED FINE LINE YANKEE 13T

RED UBAR HIGH CAPACITY 224
 RED MEADO-WEST PERSUASION
 RED 5L NORSEMAN KING 2291
 RED PELTONS MISS IDA 0547R
 RED NORTHLINE ROB ROY 122K
 RED DMM MISS ESSENCE 58M
 RED FINE LINE MULBERRY 26P
 RED FINE LINE YANKEE 14R

CE	BW	WW	YW	MILK	BOLT EPDS	CE	BW	WW	YW	MILK
-1.5	3.7	46	83	22		8.7	1.5	64	102	18



MATERNAL SIBLING: RED BLAIR'S YANKEE 585D

The WSF Yankee 12W x Mann Red Box flush might be the most successful flush we have done at Blairs.Ag Cattle Co. and we are excited to share the genetics. We love the consistency between the flush mates but we also recognize the small differences that exist. Our confidence & commitment is evident through our retention of embryo interests in a number of the flush mates. Yankee 129K is cool built and we think you will love her big ribbed, soft made design when you see her on sale day.

Entered at CWA.

Retaining 50% embryo interest



49

RED BLAIR'S YANKEE 173J

BBC 173J | APR. 7, 2021 | 2206243

RED SLGN WIDELOAD 920W
RED MANN RED BOX 55C
 RED PELTON MISS AJA 0839U

RED BRYLOR/WSP KARWEIK 1P
RED WSF MS YANKEE 13T 12W
 RED FINE LINE YANKEE 13T

RED UBAR HIGH CAPACITY 224
 RED MEADO-WEST PERSUASION
 RED 5L NORSEMAN KING 2291
 RED PELTONS MISS IDA 0547R
 RED NORTHLINE ROB ROY 122K
 RED DMM MISS ESSENCE 58M
 RED FINE LINE MULBERRY 26P
 RED FINE LINE YANKEE 14R

CE	BW	WW	YW	MILK
-1.5	3.7	46	83	22

BOLT	CE	BW	WW	YW	MILK
EPDS	8.7	1.5	64	102	18



MAT. SIS: RED BLAIR'S YANKEE 28B

Mann Red Box continues to impress us with his ability to sire predictability and quality and he will have a lasting impact on our donor pen going forward. This mating with WSF Yankee 12W may be the most predictable mating with 12W since the Kargo flush that produced the likes of Sweet Cheeks (Wildcat Creek), Bingo (Duff's/Twin Willow), Notorious (Moose Creek), Yankee 28B (Duff's), Yankee 158B (Combust), Kargo 596D (TJ Farms) and dozens more. WSF Yankee 12W has 111 offspring in Canada alone and is one of the most productive red angus females in the breed.

- A/d to Duff Red Blood 18114 on 5/19/2022.
- Pasture exposed to BMRA Mr Detour 020 from 5/24/2022 to 6/16/2022 then exposed to Red Blair's Renown 32G from 6/17/2022 to 7/12/2022.
- Preg checked favourable to PE, due Early April





50

RED DOUBLE B LARK 225

BAX 25K | FEB. 20, 2022 | 2289269

RED SLGN WIDELOAD 920W
RED MANN RED BOX 55C
 RED PELTON MISS AJA 0839U

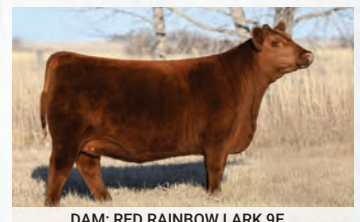
RED UBAR HIGH CAPACITY 224
 RED MEADO-WEST PERSUASION
 RED 5L NORSEMAN KING 2291
 RED PELTONS MISS IDA 0547R
 RED SVR GANGSTER 44X
 RED MOOSE CREEK LANA 108Z
 RED LAZY MC SMASH 41N
 RED SVR MISS LARK 100P

RED MOOSE CREEK WESTON 23B
RED RAINBOW LARK 9E
 RED STEWART LARK 602S

PE	CE	BW	WW	YW	MILK
-1.0	2.4	48	82	26	



DAM: RED RAINBOW LARK 9E



DAM: RED RAINBOW LARK 9E



RED DOUBLE B LARK 225

Wow. With Red Box on the top side and our 2018 National Champion donor on the bottom side, we had high expectations for this pedigree. However, ever since she was a baby, we've known it was a slam dunk. Lark 225 is high tying, sharp looking, big and soft-bellied as one can be, and equipped with the hip and hind leg build that's impossible to fault. Now all you have to do is imagine this thing as a bred heifer next fall, and decide if you want to run with her or against her.

Retaining 50% Embryo Interest



51

RED BLAIR'S CORA 126K

BBC 126K | MAR. 21, 2022 | 2274127

RED SLGN WIDELOAD 920W
RED MANN RED BOX 55C
 RED PELTON MISS AJA 0839U

RED UBAR HIGH CAPACITY 224
 RED MEADO-WEST PERSUASION
 RED 5L NORSEMAN KING 2291
 RED PELTONS MISS IDA 0547R
 RED RMJ REDMAN 1T
 RED LAZY MC BESS 12S
 RED TER-RON TORNADO 157M
 RED HEAD CORA 159L

RED LAZY MC CC DETOUR 2W
RED WCR MISS CORA DE 867Z
 RED WILBAR CORA 443P

CE	BW	WW	YW	MILK	BOLT	CE	BW	WW	YW	MILK
5	0.7	38	70	24	EPDS	12.5	-1.2	59	95	25



DAM: RED WCR MISS CORA DE 867Z

One of the most decorated families in the Red Angus business is the Cora family. We were fortunate to purchase the WCR Cora 867Z donor in the Wildcat Creek dispersal and added her to our donor pen until she was sold to Urban Cattle. OK 3.0 offers a shot at adding some Cora x Red Box genetics. We are offering three (3) full sisters in 109K, 111K & 126K that are extremely similar in type and we think the future will be bright for these females.



52

RED BLAIR'S CORA 111K

BBC 111K | MAR. 1, 2022 | 2274113

RED SLGN WIDELOAD 920W
RED MANN RED BOX 55C
 RED PELTON MISS AJA 0839U

RED LAZY MC CC DETOUR 2W
RED WCR MISS CORA DE 867Z
 RED WILBAR CORA 443P

RED UBAR HIGH CAPACITY 224
 RED MEADO-WEST PERSUASION
 RED 5L NORSEMAN KING 2291
 RED PELTONS MISS IDA 0547R
 RED RMJ REDMAN 1T
 RED LAZY MC BESS 12S
 RED TER-RON TORNADO 157M
 RED HEAD CORA 159L

CE	BW	WW	YW	MILK
5	0.7	38	70	24

BOLT	CE	BW	WW	YW	MILK
EPDS	12.5	-1.2	59	95	25

53

RED BLAIR'S CORA 109K

BBC 109K | MAR. 1, 2022 | 2274146

RED SLGN WIDELOAD 920W
RED MANN RED BOX 55C
 RED PELTON MISS AJA 0839U

RED LAZY MC CC DETOUR 2W
RED WCR MISS CORA DE 867Z
 RED WILBAR CORA 443P

RED UBAR HIGH CAPACITY 224
 RED MEADO-WEST PERSUASION
 RED 5L NORSEMAN KING 2291
 RED PELTONS MISS IDA 0547R
 RED RMJ REDMAN 1T
 RED LAZY MC BESS 12S
 RED TER-RON TORNADO 157M
 RED HEAD CORA 159L

CE	BW	WW	YW	MILK
5	0.7	38	70	24

BOLT	CE	BW	WW	YW	MILK
EPDS	12.5	-1.2	59	95	25



DAM: RED WCR MISS CORA DE 867Z



GRANDDAM: RED WILBAR CORA 443P



54

RED BLAIR'S PRISCILLA 149J

BBC 149J | MAR. 22, 2021 | 2206201

RED SLGN WIDELOAD 920W
RED MANN RED BOX 55C
 RED PELTON MISS AJA 0839U

RED RINGSTEAD KARGO 215U
RED BLAIRS PRISCILLA 44Z
 RED BRYLOR PRISCILLA 67W

RED UBAR HIGH CAPACITY 224
 RED MEADO-WEST PERSUASION
 RED 5L NORSEMAN KING 2291
 RED PELTONS MISS IDA 0547R
 RED RINGSTEAD KARGO 107M
 RED RINGSTEAD MS EQUAL 589P
 RED BRYLOR SDL RICHTER 212R
 RED BRYLOR PRISCILLA 304S

CE	BW	WW	YW	MILK	BOLT	CE	BW	WW	YW	MILK
1	1.3	42	74	21	EPDS	9.1	-0.1	62	96	22

Red Blair's Priscilla 149J is royally bred and we are very excited about what the future looks like for her. She is moderate in her type just like her sire & dam and will raise those ultra efficient type. She exhibits a monster rib design, big hair and has the kind of flex in her joints that we all seek. Her Kargo dam Blair's Priscilla 44Z is well known all around the globe and has proven herself over and over for Double B Angus and progressive breeders that have invested in her genetics.

- Ai'd to Duff Red Blood 18114 on 5/19/2022.
- Pasture exposed to BMRA Mr Detour 020 from 5/24/2022 to 6/16/2022 then exposed to Red Blair's Renown 32G from 6/17/2022 to 7/12/2022
- Preg checked favourable to PE due late March

Retaining 50% embryo interest





55

RED BLAIR'S PRISCILLA 108K

BBC 108K | MAR. 1, 2022 | 2274047

RED SOO LINE POWER EYE 161X
RED KJHT POWER TAKE OFF
 RED SRA PAINTBUCKET

RED RINGSTEAD KARGO 215U
RED BLAIRS PRICILLA 44Z
 RED BRYLOR PRISCILLA 67W

RED COCKBURN RIBEYE 308U
 RED TR LYNN 301R
 RED NORTHLINE FAT TONY 605U
 RED SRA PICABO PROMISE
 RED RINGSTEAD KARGO 107M
 RED RINGSTEAD MS EQUAL 589P
 RED BRYLOR SDL RICHTER 212R
 RED BRYLOR PRISCILLA 304S

CE	BW	WW	YW	MILK
3.5	1.7	36	69	22

BOLT	CE	BW	WW	YW	MILK
EPDS	10.7	0.5	56	90	26



DAM: RED BLAIRS PRICILLA 44Z

We are super excited we are able to offer some limited Red Blair's Priscilla 44Z genetics as they are special and rare. Priscilla 108K is a full sister to Red Double B Priscilla 110 that sold in OK 2.0 to Clint Kennedy in Texas. We have had good success with the Priscilla x Power Take Off mating



56

RED DOUBLE B PRISCILLA 127

BAX 27J | MAR. 13, 2021 | 2258880

RED SOO LINE POWER EYE 161X
RED KJHT POWER TAKE OFF
 RED SRA PAINTBUCKET

RED RINGSTEAD KARGO 215U
RED BLAIRS PRICILLA 44Z
 RED BRYLOR PRISCILLA 67W

RED COCKBURN RIBEYE 308U
 RED TR LYNN 301R
 RED NORTHLINE FAT TONY 605U
 RED SRA PICABO PROMISE
 RED RINGSTEAD KARGO 107M
 RED RINGSTEAD MS EQUAL 589P
 RED BRYLOR SDL RICHTER 212R
 RED BRYLOR PRISCILLA 304S

CE	BW	WW	YW	MILK
3.5	1.7	36	69	22

CE	BW	WW	YW	MILK
3.5	1.7	36	69	22



FLUSHMATE: RED DOUBLE B PRISCILLA 110

I owe a lot of my success in the industry to one very special heifer; Priscilla 44Z. She needs no introduction to the breed, and her progeny has continued her legacy by dominating shows and sales on a national level. An example of that is 127's flush mate sister who sold for \$10,500 in last year's Opportunity Knocks Sale to Clay Kennedy. 127 puts a lot of interesting pieces together, an attractive neck set, tons of muscle, and dense yet flexible running gear, so do not miss out on one of the last 44Z daughters to sell.

- AI bred to Duff Red Blood 18114 on May 1st, then exposed to U2 Urgent 12G from May 16 to July 19th.
- Favourable to AI date.



57

RED BLAIR'S PRISCILLA 180J

BBC 180J | APR. 14, 2021 | 2206219

RED SOO LINE POWER EYE 161X
RED DAMAR TRUMP C512
 RED DAMAR OH BABY W168

RED RINGSTEAD KARGO 215U
RED BLAIRS PRICILLA 44Z
 RED BRYLOR PRISCILLA 67W

RED COCKBURN RIBEYE 308U
 RED TR LYNN 301R
 RED FINE LINE MULBERRY 26P
 RED T-S OLIVIA 706P
 RED RINGSTEAD KARGO 107M
 RED RINGSTEAD MS EQUAL 589P
 RED BRYLOR SDL RICHTER 212R
 RED BRYLOR PRISCILLA 304S

CE	BW	WW	YW	MILK
8	-0.6	34	58	21

BOLT	CE	BW	WW	YW	MILK
EPDS	12.9	-1.9	54	82	24



FULL SIS: RED DOUBLE B PRISCILLA 119



FULL SIS: RED DOUBLE B PRISCILLA 120

Lots to love about Red Blair's Priscilla 180J. The chance to own Red Blair's Priscilla 44Z offspring is getting rare and hard to find. Add this dark red, good haired Damar Trump daughter to your program and put a little Priscilla to work for you.

- Ai'd to Duff Red Blood 18114 on 5/19/2022.
- Pasture exposed to BMRA Mr Detour 020 from 5/24/2022 to 6/16/2022 then exposed to Red Blair's Renown 32G from 6/17/2022 to 7/12/2022. Preg checked favourable to PE, due late March

Soft made, soft haired, big boned and chalked full of performance is the terms used to describe Jessie 118K. Another example of the value the \$41,000 SSS Jessie 261Z has brought to our program.



DAM: RED SSS JESSIE 261Z

58

RED BLAIR'S JESSIE 118K

BBC 118K | MAR. 16, 2022 | 2274152

- RED SOO LINE POWER EYE 161X
- RED KJHT POWER TAKE OFF**
- RED SRA PAINTBUCKET

- RED SSS SOLDIER 365W
- RED SSS JESSIE 261Z**
- RED SSS JESSIE 654X

- RED COCKBURN RIBEYE 308U
- RED TR LYNN 301R
- RED NORTHLINE FAT TONY 605U
- RED SRA PICABO PROMISE
- RED SVR KNIGHT 236T
- RED SSS BELLE 342S
- RED BRYLOR BIG ROCK 85T
- RED SSS JESSIE 112R

CE	BW	WW	YW	MILK
2.5	1.6	33	65	25

BOLT	CE	BW	WW	YW	MILK
EPDS	12.3	-0.2	53	84	26

59

RED BLAIR'S JESSIE 123K

BBC 123K | MAR. 19, 2022 | 2274123

- RED SOO LINE POWER EYE 161X
- RED KJHT POWER TAKE OFF**
- RED SRA PAINTBUCKET

- RED SSS SOLDIER 365W
- RED SSS JESSIE 261Z**
- RED SSS JESSIE 654X

- RED COCKBURN RIBEYE 308U
- RED TR LYNN 301R
- RED NORTHLINE FAT TONY 605U
- RED SRA PICABO PROMISE
- RED SVR KNIGHT 236T
- RED SSS BELLE 342S
- RED BRYLOR BIG ROCK 85T
- RED SSS JESSIE 112R

CE	BW	WW	YW	MILK
2.5	1.6	33	65	25

BOLT	CE	BW	WW	YW	MILK
EPDS	12.3	-0.2	53	84	26

Another great example of the powerful genetics we have come to expect from Red SSS Jessie 261Z. The two full sisters are similar in type and you will observe that when you analyze their rib design, bone and power in their front 1/3.





60

RED WILBAR BLOCKANA 862J

WJD 862J | FEB. 9, 2021 | 2204438

RED SSS GRAVITY 296E
RED SSS GLENFIDDICH 741G
 RED SSS DUCHESS 416C

RED WILBAR SPEED 32A
RED WILBAR BLOCKANA 236E
 RED WILBAR BLOCKANA 14A

RED SSS BIG GAME 814A
 RED SSS LASS 704A
 RED FLYING K MAX 159Y
 RED SSS DUCHESS 656X
 RED LAZY MC HUSTLE 18T
 RED WILBAR CORA 443P
 RED WILBAR TORNADO 385X
 RED BAR-E-L CHERRY 94P

CE	BW	WW	YW	MILK
-1	2.4	33	67	24

Here is a female we just love in terms of depth of body and overall mass, a true brood cow in the making. These will be the first Glenfiddich daughters in production. Red SSS Glenfiddich 741G was a \$30,000 sale feature from Triple S Red Angus. He has sired moderate birth weight progeny with a very attractive look. What we like best are the gorgeous daughters. They appear to be dropping picture perfect udders. On the cow side, the Blockanas are one of the well noted cow families not only in the Wilbar herd, but around the Red Angus World. The same Blockana cow family produced a \$25,500 bred heifer for us at the 2022 Red Roundup sale.

862J is bred to Red Wilbar Precinct 800J, an outcross Duff Red Blood son out of our black Jennifer cow family. He is a flush mate to the \$32,000 Red Wilbar Intuition 832J at L83 and JK in North Dakota.

- April 14, 2022: AI to Red Wilbar Intuition 832J
- April 15 to June 12, 2022: Exposed to Red Wilbar Precinct 800J (observed bred May 22, 2022)



SERVICE SIRE TO LOTS 60 & 61: RED WILBAR PRECINCT 800J



DAM: RED WILBAR BLOCKANA 236E



Wilbar
Lot 61

61

RED WILBAR LANA 894J

WJD 894J | MAR. 1, 2021 | 2204473

RED SSS GRAVITY 296E
RED SSS GLENFIDDICH 741G
RED SSS DUCHESS 416C

RED SSS BIG GAME 814A
RED SSS LASS 704A
RED FLYING K MAX 159Y
RED SSS DUCHESS 656X
DKF ELIMINATOR 15A
DKF MISS NET WORTH 21A
RED HOWE FINEST TRADITION 20W
RED WILBAR LANA 603S

RED DKF RAZOR 55C
RED WILBAR LANA 447G
RED WILBAR LANA 839Z

CE	BW	WW	YW	MILK
4	0.5	40	74	22



SIRE LOTS 60, 61 & 62: RED SSS GLENFIDDICH 741G

This heifer has a tremendous look. A real brood cow in the making. She is moderate in stature but massive in body and rib shape. The combination of Glenfiddich and Razor is sure to make an ultra-maternal female with superior udder quality. The dam, 447G is one of our favorite 2019 born cows. She is an ideal, wedge-shaped female that is donor quality.

Bred to Red Wilbar Precinct 800J, an exciting outcross Duff Red Blood son and flush-mate to the \$32,000 Red Wilbar Intuition 832J at L83 and JK.

- April 15 – June 12, 2022: Exposed to Red Wilbar Precinct 800J (observed bred May 20, 2022)



62

RED WILBAR SOXRO 874J

WJDO 874J | FEB. 17, 2021 | 2204670

RED SSS GRAVITY 296E
RED SSS GLENFIDDICH 741G
 RED SSS DUCHESS 416C

RED DKF RAZOR 55C
RED WILBAR SOXRO 87F
 RED WILBAR SOXRO 897Z

RED SSS BIG GAME 814A
 RED SSS LASS 704A
 RED FLYING K MAX 159Y
 RED SSS DUCHESS 656X
 DKF ELIMINATOR 15A
 DKF MISS NET WORTH 21A
 RED TER-RON RELOAD 703T
 RED WILBAR SOXRO 106U

CE	BW	WW	YW	MILK
0	2.1	36	70	21

A sale feature by Glenfiddich. Soxro 874J is very angular and feminine coupled with a big sweeping rib and square hip. Her grandam 897Z is still in production having raised multiple bull sale features throughout the years. A maternal sister to 874J was the \$16,000 high-selling red bred heifer at Red Roundup last year to TER-RON. Bred to our newest herd bull acquisition PIE Quarterback 0814. He is the first son of the great Quarterback 789 in Canada and out of a flush mate to the \$105,000 9 Mile Franchise. His first calves are very stylish and are sure to command a lot of attention in the future.

- April 14, 2022: AI to Red PIE Quarterback 0814 (favourable)
- April 15 to May 16, 2022: Exposed to Red PIE Quarterback 0814

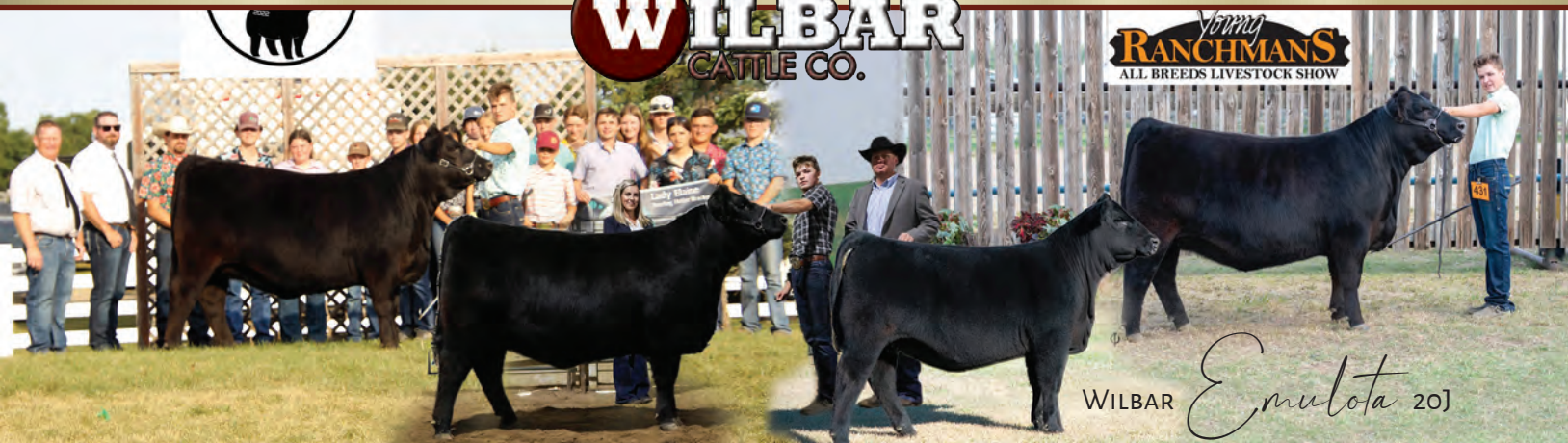
Parentage verification covered by Wilbar if needed.



\$16,000 MATERNAL SIBLING: RED WILBAR SOXRO 670H



SERVICE SIRE: RED PIE QUARTERBACK 0814



WILBAR *Emulota* 20J

Purchased and Shown by Ryder Wildman of Toward Cattle Co. It was a pleasure to watch you rack up this list of achievements! • Reserve Champion Canadian All Breeds Lady Elaine Bracket Challenge • Champion heifer/Reserve Champion Female Lac Ste Anne District 4H • Senior Champion Yearling Heifer Alberta Provincial 4H Show • Supreme Female Darwell Fair • Supreme Female Barrhead Beef Bash



RED DOUBLE B *Priscilla* 121



DOUBLE B

Red Double B Priscilla 121: Sold in Opportunity Knocks 2.0 to Gus Reid (Moorefield, ON). We were honored to be a part of Opportunity Knocks Sale 2.0 alongside some of the nation's most competitive and respected cattle operations. We knew that we had to bring the highest quality offering we could, even when it was just six heifer calves. Red Double B Priscilla 121 is a perfect example of our dedication to excellence. Gus Reid purchased 121 as the high selling red Angus heifer calf in last year's sale, and has had a whirlwind of success campaigning her. At her first outing, she was named Grand Champion Red Angus Female at the 2022 Summer Synergy show under the infamous Ryan Rash, so needless to say, we are excited to see her success continue for Gus both in and out of the ring.



BLAIR'S *Erica* 267F

BLAIR'S *Madame Pride* 306H

BLAIR'S *Forever Lady* 646H



The true value of a program is always measured by the future success of breeders that invest in your genetics. We would like to thank everyone that has showed confidence in our path & direction. Examples of future success is evident in the above females that were purchased in previous Opportunity Knocks sales by Golden Oak Livestock (Blair's Erica 267F), Ter-Ron Farms (Blair's Forever Lady 646H) & Bar E-L Angus (Blair's Madame Pride 306H)

MJNB 5H was purchased by Wooden Shoe and Tymber Billman. Neal Ward was looking for a special one for his granddaughter and he found one in 5H.

Erica and Tymber have been enjoying a lot of success south of the border. Receiving top honors at the Aggie Classic, Bonneville, EISF Junior Market, Show Girls Heifer Futurity, Rocky Mountain Overall High Point Female. As well in the Angus Breed shows at the Eastern Idaho State Fair and just recently being crowned

Grand Champion Cow calf in the open and junior divisions at the Nile. Thank you to the Ward and Bilman Families for their interest in our program. Congrats to all the Juniors on your success.



BLAIRSWEST *Erica* 5H





Lot 63

63

RED BLAIRSWEST LARK 82J

MJNB 82J | FEB. 15, 2021 | 2244205

RED SIX MILE GAME FACE 164Y
RED TWG TOMMY JACK 166A
 RED DAMAR PASSION X166

RED VGW GAME PLAN 816
 RED SIX MILE LAKOTO 35W
 RED FINE LINE MULBERRY 26P
 RED DFRA JOPLIN 501L
 RED SILVEIRAS MISSION NEXUS
 RED DAMAR MIMI W085
 RED SOUTHLAND ENERGIZER 100R
 RED BAR-E-L LARKABA 23R

RED DAMAR NEXT D852
RED BLAIR'S LARKABA 6G
 RED BLAIR'S LARKABA 17T

CE	BW	WW	YW	MILK	BOLT	CE	BW	WW	YW	MILK
5	1.2	34	58	25	EPDS	4	1.3	35	59	24

MJNB 82J was an in-dam purchase from Opportunity Knocks 1.0 from BBC 6G (Damar Next X Larkaba 17T) We think this Tommy Jack Daughter is easily one of the highlights of our bred heifer pen and we are proud to be contributing her to the offering on December 19. She is very neat fronted and presents herself very well, she has a lot of mass and rib shape all in a super nice package. Teat placement and size look to be promising for this one in the future. **Parent Verified**

- AI Bred to RED U2 Revival 147G on April 19, 2022.
- Pasture Exposed to Red U2 Revival from May 10 to June 10. Favourable to PE



SIRE: RED TWG TOMMY JACK 166A



MATERNAL GRAND-DAM: RED BLAIR'S LARKABA 17T

We are excited to offer two full sisters off the powerful Red SSS Jessie 261Z donor which was our \$41,000 pick of the entire SSS cowherd. Good thing we made that purchase a few years ago because the same pick in this years 50th Annual Red Roundup sale brought \$170,000. Jessie 261Z has proved her worth & predictability through multiple different sire matings. The mating with Damar Next D852 really worked well and these moderate made soft sided heifers will make great cows. You should expect great udders and great mothers from this mating.

- Ai'd to Duff Red Blood 18114 on 5/19/2022.
- Preg checked favourable to AI, due late February
- Pasture exposed to BMRA Mr Detour 020 from 5/24/2022 to 6/16/2022 then exposed to Red Blair's Renown 32G from 6/17/2022 to 7/12/2022



Lot 64

64

RED BLAIR'S JESSIE 148J

BBC 148J | MAR. 22, 2021 | 2206261

RED SILVEIRAS MISSION NEXUS
RED DAMAR NEXT D852
 RED DAMAR MIMI W085

RED SSS SOLDIER 365W
RED SSS JESSIE 261Z
 RED SSS JESSIE 654X

RED LJC MISSION STATEMENT P27
 RED SILVEIRAS DAORV 8399
 RED FINE LINE MULBERRY 26P
 RED DFRA TARMILY N512
 RED SVR KNIGHT 236T
 RED SSS BELLE 342S
 RED BRYLOR BIG ROCK 85T
 RED SSS JESSIE 112R

CE	BW	WW	YW	MILK
4.5	0.3	34	58	25

BOLT	CE	BW	WW	YW	MILK
EPDS	12.4	-2.3	55	84	25

65

RED BLAIR'S JESSIE 152J

BBC 152J | MAR. 24, 2021 | 2206235

RED SILVEIRAS MISSION NEXUS
RED DAMAR NEXT D852
 RED DAMAR MIMI W085

RED SSS SOLDIER 365W
RED SSS JESSIE 261Z
 RED SSS JESSIE 654X

RED LJC MISSION STATEMENT P27
 RED SILVEIRAS DAORV 8399
 RED FINE LINE MULBERRY 26P
 RED DFRA TARMILY N512
 RED SVR KNIGHT 236T
 RED SSS BELLE 342S
 RED BRYLOR BIG ROCK 85T
 RED SSS JESSIE 112R

CE	BW	WW	YW	MILK
4.5	0.3	34	58	25

BOLT	CE	BW	WW	YW	MILK
EPDS	12.4	-2.3	55	84	25



DAM: RED SSS JESSIE 261Z

- Ai'd to Duff Red Blood 18114 on 5/19/2022.
- Preg checked favourable to AI, due late February
- Pasture exposed to BMRA Mr Detour 020 from 5/24/2022 to 6/16/2022 then exposed to Red Blair's Renown 32G from 6/17/2022 to 7/12/2022



Lot 65



66

RED BLAIR'S HEATHER 414F

BBC 414F | APR. 30, 2018 | 2073225

U2 T.K.O.254Z
RED U-2 FOREIGNER 413B
 RED U-2 ANEXA 8026U

XO CROWFOOT 0102X
RED OLE HEATHER 66D
 CROWFOOT 3177N

YOUNG DALE XCLUSIVE 25X
 RED U-2 ANEXA 333N
 RED U-2 BIG LEAGUE 544R
 U-2 ANEXA 4042P
 RED CROWFOOT MOONSHINE 8081U
 XO CROWFOOT BLACKBIRD 8810U
 RED CROWFOOT PM 757G
 STEVENSON HEATHER 499G

CE	BW	WW	YW	MILK	BOLT	CE	BW	WW	YW	MILK
4	1.2	48	77	26	EPDS	11.7	-0.9	60	87	18

If you believe in moderate made highly efficient genetics then Red Blair's Heather 414F is designed specifically for your program. Her dam was our pick of the OLE Farms cowherd and Blair's Heather 414F was the in dam purchase. She is awesome haired and is built like a truck with a perfectly designed skull and excellent udder. Our intent in Opportunity Knocks is to offer the very best and Heather 414F is definitely that.

- Ai'd to Red Blair's Blind Spot 558H on 5/19/2022.
- Preg checked favourable to AI due late February
- Pasture exposed to Cockburn Arsenal 8001 from 5/24/2022 to 6/27/2022.

Retaining the right to one successful flush at the buyers convenience and the sellers expense



RED BLAIR'S HEATHER 414F

Red Sooline Power Eye 161X semen is sold out in Canada and this will be one of the very last opportunities to add Power Eye to your program. Power Eye 161X adds rib, bone and great hair while maintaining outstanding calving ease.

- AI'd to Duff Red Blood 18114 on 5/1/2022.
- Preg checked favourable to AI, due early February
- Pasture exposed to Red U2 Urgent 12G from 5/16/2022 to 6/21/2022



SIRE: RED SOO LINE POWER EYE 161X



Lot 67

67

RED ROY MAC ANNIE 5J

KSM 5J | JAN. 4, 2021 | 2201333

- RED COCKBURN RIBEYE 308U
- RED SOO LINE POWER EYE 161X**
- RED TR LYNN 301R
- RED SIX MILE MOONSHINE MAN
- RED RSL ANNIE 214D**
- RED RSL ANNIE 24Y

- RED BAR-E-L RIBEYE 103R
- RED WILBAR CORA 443P
- RED GEIS KNIGHT HAWK 14'02
- TR LYNN 105L
- RED CROWFOOT MOONSHINE 8081U
- RED LAZY MC SPARKLE 2U
- RED RSL STOCKMAN 587R
- RED RSL ANNIE 688J

CE	BW	WW	YW	MILK
11	-2.3	36	61	17

BOLT	CE	BW	WW	YW	MILK
EPDS	17.6	-4	49	82	19

68

RED BLAIRSWEST SUGRLAND 3J

MJNB 3J | JAN. 21, 2021 | 2287833

- U2 T.K.O.254Z
- RED U-2 FOREIGNER 413B**
- RED U-2 ANEXA 8026U
- RED SIX MILE CUSTOM MADE 505C
- RED BLAIRSWEST SUGRLAND 42F**
- RED BLAIRS SUGRLAND 5X

- YOUNG DALE XCLUSIVE 25X
- RED U-2 ANEXA 333N
- RED U-2 BIG LEAGUE 544R
- U-2 ANEXA 4042P
- RED U-2 RECKONING 149A
- RED SIX MILE LASSIE 207Z
- RED TOWAW INTEGRITY 17M
- RED BLAIR'S SUGRLAND 5U

CE	BW	WW	YW	MILK
8.0	-1.4	40	64	23

BOLT	CE	BW	WW	YW	MILK
EPDS	15.8	-3.6	44	60	19

U2 Foreigner is a sire we have used for a couple years and think highly of his calves, and the calves we have seen while out on tour are impressive. 42F is the only daughter that we have in our herd from our building block cow BBC 5X. 42F has a wonderful udder and I am sure this foreigner daughter will follow in her mother's footsteps.

Parent verified.

- AI'd April 30, 2022 to Red U2 Revival147G.
- Pasture exposed to Red U2 Revival 147G from May 10 to June 10, 2022.
- Pasture Bred June 2, 2022, due March 11. Favourable to PE.



Lot 68



If you know me, you know I'm a sucker for two things; dark cherry red cattle, and anything to do with 42A bloodlines, so it is no question why 104 has always been a personal favourite. Lucky Strike has been the talk of the town ever since he was a calf, and his progeny speak for themselves. Get in on one of the up-and-coming sires in the breed with this stylish, elephant-legged, soggy-made cow prospect with an exceptional udder development.

Retaining the right to one successful future flush at the buyers convenience and the sellers expense

- AI bred to Duff Red Blood 18114 on May 1st, then exposed to U2 Urgent 12G from May 16 to July 19th 2022.
- Favourable to AI date.



SIRE: RED DOUBLE B LUCKY STRIKE 9001

69

RED DOUBLE B TAFFETA 104

BAX 4J | FEB. 4, 2021 | 2230261

RED BLAIR'S BINGO 556D
RED DOUBLE B LUCKY STRIKE 9001
 RED BLAIR'S LARKABA 42A

RED BLAIR'S BINGO 581B
 RED BLAIR'S DYNAMINT 46B
 RED WHEEL GANGSTER 31Y
 RED BLAIRS LARKABA 101Y
 RED MRLA NEW ERA 87Y
 RED SIX MILE MARTA 300Y
 STEWART PANTHER 19X
 RED YY TAFFETA 306N

CE	BW	WW	YW	MILK
0	3.9	42	66	27

70

RED BLAIR'S UPTOWN GIRL 127J

BBC 127J | MAR. 4, 2021 | 2195994

RED U-2 RECKONING 149A
RED U-2 RENOWN 193C
 RED U-2 ENVIOUS 147X

RED U-2 RECON 192Y
 RED U-2 ANEXA 271Y
 RED U-2 DYNAMO 7021T
 RED U-2 ENVIOUS 216M
 RED RMJ REDMAN 1T
 RED LAZY MC BESS 12S
 RED FINE LINE MULBERRY 26P
 NLC UPTOWN GIRL 19U

CE	BW	WW	YW	MILK	BOLT EPDS
-10	6.2	39	64	19	4.4



Take a very close look at this super cool pedigree. Renown, Detour & Mulberry give you a perfect blend of performance & calving ease. She will be easy to find on sale day.

- Ai'd to Duff Red Blood 18114 on 5/19/2022.
- Preg checked favourable to AI, due Late February
- Pasture exposed to BMRA Mr Detour 020 from 5/24/2022 to 6/16/2022 then exposed to Red Blair's Renown 32G from 6/17/2022 to 7/12/2022



71

BLAIR'S INSTINCT 346F RC

BBC 346F | APR. 11, 2018 | 2049282

RED TER-RON PARKER 34A
RED TER-RON SANTANA 73C
 RED TER-RON BRANDY 162Y

TER-RON PARK PLACE 18Y
 RED TER-RON DIAMOND MIST 164Y
 RED U-2 BIG LEAGUE 544R
 RED TER-RON BRANDY 211M
 O C C MISSING LINK 830M
 O C C DIXIE ERICA 814G
 O C C MAGICIAN 888M
 JAUER ANCHOR 3002 0108

DUFF BASIC INSTINCT 6501
RSKY 6540 MS INSTINCT 0065
 RSKY 0108 MS MAGICIAN 6540

CE	BW	WW	YW	MILK	BOLT	CE	BW	WW	YW	MILK
2	1.8	41	66	16	EPDS	9.1	-0.1	60	92	13

Attention Red Angus breeders:

It is very fitting to lead of the black/red carrier section with a highly decorated pedigree. The dam Ms Instinct 0065 is owned with Canadian Donors. I can promise you that the udder quality on this mating is outstanding and udder quality will be HIGHLY predictable. Her Damar Trump son sells on Feb 7th in the Pursuit of Excellence Bull Sale.

- Ai'd to Red Blair's Blind Spot 558H on 5/19/2022.
- Preg checked favourable to AI due late February
- Pasture exposed to Cockburn Arsenal 8001 from 5/24/2022 to 6/27/2022.

Retaining the right to one successful flush at the buyers convenience and the sellers expense



DAM: RSKY 6540 MS INSTINCT 0065



BLAIR'S INSTINCT 346F RC



Lot 72

72

BLAIR'S MADAME PRIDE 737G

BBC 737G | APR. 7, 2019 | 2117094

- RED RINGSTEAD KARGO 107M
- RED RINGSTEAD KARGO 215U**
- RED RINGSTEAD MS EQUAL 589P
- S A V 004 DENSITY 4336
- S A V MADAME PRIDE 0151**
- S A V MADAME PRIDE 0075
- RED COMPASS KARGO 83K
- RED GET-A-LONG MRS. YOUNG 095
- RED SSS YUKON 440K
- RED SSS MISS EQUAL 495G
- S A V 8180 TRAVELER 004
- S A V MAY 7238
- S A F 598 BANDO 5175
- S A V MADAME PRIDE 8264

CE	BW	WW	YW	MILK	BOLT	CE	BW	WW	YW	MILK
6	2.8	48	79	19	EPDS	13.1	0.6	68	107	16

Pay super close attention here!!! Madame Pride 737G is a maternal sister to the world renowned SAV Renovation and lets face it..... it doesn't get much cooler than that in the Red breed. Imagine the addition of some SAV Density in the Red Angus breed. Females like this only become available in unique offerings like Opportunity Knocks. We are retaining a 50% embryo interest and look forward to working with a new progressive breeder on her future.

- Pasture Exposed to Cockburn Arsenal 8001 from 5/24/2022 to 6/27/2022
- Preg checked favourable to PE, due mid-March

Retaining 50% embryo interest



DAM: S A V MADAME PRIDE 0151



MATERNAL SISTER: BLAIR'S PRIDE 306H



Lot 73

73

BLAIR'S MADAME PRIDE 506J RC

BBC 506J | FEB. 17, 2021 | 2199954

RED RINGSTEAD KARGO 107M	RED COMPASS KARGO 83K
RED RINGSTEAD KARGO 215U	RED GET-A-LONG MRS. YOUNG 095
RED RINGSTEAD MS EQUAL 589P	RED SSS YUKON 440K
	RED SSS MISS EQUAL 495G
RED DAMAR TRUMP C512	RED SOO LINE POWER EYE 161X
BLAIR'S MADAME PRIDE 651G	RED DAMAR OH BABY W168
S A V MADAME PRIDE 0151	S A V 004 DENSITY 4336
	S A V MADAME PRIDE 0075

CE	BW	WW	YW	MILK	BOLT	CE	BW	WW	YW	MILK
10	0.4	42	68	21	EPDS	14.4	-1.5	61	94	22

Another cool option here in the black/red carrier section. Look into the pedigree and you will see the famous SAV Madame Pride 0151 on the bottom who is of course the dam to SAV Renovation who is stamping great cattle around the world. Add to that the predictability of Ringstead Kargo and the power, bone and hair from Damar Trump C512(Power Eye 161X son) I think you have something pretty interesting. She will be easy to find on sale day.

- Ai'd to Duff Red Blood 18114 on 5/19/2022.
- Pasture exposed to BMRA Mr Detour 020 from 5/24/2022 to 6/16/2022 then exposed to Red Blair's Renown 32G from 6/17/2022 to 7/12/2022.
- Preg checked favourable to PE, due late March

Retaining the right to one successful flush at the buyers convenience and the sellers expense



GRANDDAM: BLAIR'S MADAME PRIDE 0151



PATERNAL SISTER: RED BLAIR'S MONIQUE 522C



Lot 74

I'm very excited about this pedigree and the future of Blackbird 503J. The dam was a favorite around here but unfortunately got hurt so her future lives on in Blackbird 503J. As you go through the catalog you can see the influence of the Blackbird cow family.

- Ai'd to Duff Red Blood 18114 on 5/19/2022.
- Preg checked favourable to AI, due late February
- Pasture exposed to Red Blair's Renown 32G from 6/17/2022 to 7/12/2022.



SIRE: RED RINGSTEAD KARGO 215U



MAT. SIS: BLAIR'S BLACKBIRD 316F

74

BLAIR'S BLACKBIRD 503J RC

BBC 503J | FEB. 11, 2021 | 2199953

- | | |
|---------------------------------|-------------------------------|
| RED RINGSTEAD KARGO 107M | RED COMPASS KARGO 83K |
| RED RINGSTEAD KARGO 215U | RED GET-A-LONG MRS. YOUNG 095 |
| RED RINGSTEAD MS EQUAL 589P | RED SSS YUKON 440K |
| | RED SSS MISS EQUAL 495G |
| RED DAMAR TRUMP C512 | RED SOO LINE POWER EYE 161X |
| BLAIR'S BLACKBIRD 714G | RED DAMAR OH BABY W168 |
| DUFF EB 692 BLACKBIRD 0256 | DUFF E BLAST 8138 |
| | DUFF NL 1T2 BLACKBIRD 692 |

CE	BW	WW	YW	MILK
10	0.3	47	73	22

BOLT	CE	BW	WW	YW	MILK
EPDS	13.7	-1.7	62	91	27

75

BLAIR'S LASS 698E RC

BBC 698E | MAR. 17, 2017 | 1999313

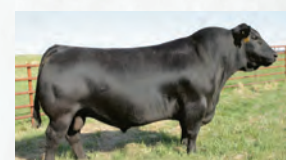
- | | |
|-----------------------------|--------------------------|
| RITO 707 OF IDEAL 3407 7075 | R R RITO 707 |
| S A V RESOURCE 1441 | IDEAL 3407 OF 1418 076 |
| S A V BLACKCAP MAY 4136 | S A V 8180 TRAVELER 004 |
| | S A V MAY 2397 |
| RED SSS BOMBER 907G | RED SSS BOOMER 803B |
| RED JCC LASS 63K | RED CROWFOOT KATE 435D |
| RED CUTARM YONSOTTU 247B | RED DEKAP RED DALLES 345 |
| | RED CUTARM YONSOTTU 718Y |

CE	BW	WW	YW	MILK
-1	2.2	46	85	18

BOLT	CE	BW	WW	YW	MILK
EPDS	8.7	0.9	63	106	13



Lot 75



SIRE: S A V RESOURCE 1441

I have numerous people tell me you can't have too much SAV Resource 1441 in your program so imagine if that was in your red angus program. Lass 698E also just happens to be a direct daughter off the dam to the 2005 CWA Grand Champion Female. Cool pedigree here.

- Ai'd to Red Blair's Blind Spot 558H on 5/19/2022.
- Preg checked favourable to AI, due late February
- Pasture exposed to Cockburn Arsenal 8001 from 5/24/2022 to 6/27/2022.



76

GOLDEN SUNSET PIEBIRD 3C RC

GSR 3C | JAN. 11, 2015 | 1847730

	CROWFOOT 6004S
RED CROWFOOT MOONSHINE 8081U	RED CROWFOOT BRNDINA 6359S
XO CROWFOOT 0102X	CROWFOOT EQUATION 5793R
XO CROWFOOT BLACKBIRD 8810U	CFCC 620K
	RED MLK CRK CUB 722
RED CROWFOOT OLE'S OSCAR 2042M	RED CROWFOOT OMEGA 9179J
RED OLE PIEBIRD 154X	RED 5L FOREVER GRAND 5834
RED OLE PIEBIRD 95U	RED OLSON PIEBIRD 21N

CE	BW	WW	YW	MILK	BOLT	CE	BW	WW	YW	MILK
6	-0.4	39	63	24	EPDS	12.5	-1.9	53	80	22



DAUGHTER: RED BLAIR'S PIEBIRD 532E

If you are in the Red Angus business, here is a Black/Red carrier that we are extremely proud to present. She has proven herself in our program and will be a welcome addition to your herd. She is moderate made with an excellent udder, tons of rib and a great attitude. Her sire, XO Crowfoot 0102X, has 953 offspring registered in Canada. Daughters sell as lot 77 and 78.

- Aï'd to Red Blair's Blind Spot 558H on 5/19/2022.
- Pasture exposed to Cockburn Arsenal 8001 from 5/24/2022 to 6/27/2022.
- Preg checked favourable to PE due mid-March



Lot 77

A shot of U2 Renown 193C to add some foot quality and cow power to the pedigree. Her dam Golden Sunset Piebird 3C sells as Lot 76 and her sister Blair's Piebird 521G sells as Lot 78.

- A1'd to Duff Red Blood 18114 on 5/19/2022.
- Preg checked favourable to AI, due late February
- Pasture exposed to BMRA Mr Detour 020 from 5/24/2022 to 6/16/2022 and then exposed to Red Blair's Renown 32G from 6/17/2022 to 7/12/2022.



DAM: GOLDEN SUNSET PIEBIRD 3C

77

BLAIR'S PIEBIRD 548J RC

BBC 548J | MAR. 6, 2021 | 2199957

RED U-2 RECKONING 149A
RED U-2 RENOWN 193C
 RED U-2 ENVIOUS 147X

XO CROWFOOT 0102X
GOLDEN SUNSET PIEBIRD 3C
 RED OLE PIEBIRD 154X

RED U-2 RECON 192Y
 RED U-2 ANEXA 271Y
 RED U-2 DYNAMO 7021T
 RED U-2 ENVIOUS 216M
 RED CROWFOOT MOONSHINE 8081U
 XO CROWFOOT BLACKBIRD 8810U
 RED CROWFOOT OLE'S OSCAR 2042M
 RED OLE PIEBIRD 95U

CE	BW	WW	YW	MILK
-2	2.8	37	58	20

BOLT	CE	BW	WW	YW	MILK
EPDS	8	1.1	55	79	22

78

BLAIR'S PIEBIRD 521G RC

BBC 521G | FEB. 23, 2019 | 2085770

RED SOO LINE POWER EYE 161X
RED KJHT POWER TAKE OFF
 RED SRA PAINTBUCKET

XO CROWFOOT 0102X
GOLDEN SUNSET PIEBIRD 3C
 RED OLE PIEBIRD 154X

RED COCKBURN RIBEYE 308U
 RED TR LYNN 301R
 RED NORTHLINE FAT TONY 605U
 RED SRA PICABO PROMISE OSF
 RED CROWFOOT MOONSHINE 8081U
 XO CROWFOOT BLACKBIRD 8810U
 RED CROWFOOT OLE'S OSCAR 2042M
 RED OLE PIEBIRD 95U

CE	BW	WW	YW	MILK
3	1.1	36	68	23

BOLT	CE	BW	WW	YW	MILK
EPDS	12.1	0.4	53	86	24



Lot 78



SIRE: RED KJHT POWER TAKE OFF

A direct daughter of the Golden Sunset Piebird 3C that sells as Lot 77 and she exemplifies what the Piebird cow family can do. I think you will appreciate her length of body and her sweet made front end. Expect an exceptional udder on Piebird 521G.

- Pasture exposed to Cockburn Arsenal 8001 from 5/24/2022 to 6/27/2022.
- Preg checked favourable to PE, due mid-March



Lot 79

79

BLAIR'S BLACKBIRD 871E RC

BBC 871E | MAY. 9, 2017 | 2056940

RED COMPASS MULBERRY 449M
RED FINE LINE MULBERRY 26P
 RED DUS FAYETTE 8G

RED HR RAMBO ET 91K
 RED BRYLOR MISS ROC 20H
 RED SILVEIRAS REDFORD
 RED MC DOUGALL FAYETTE 59A
 S A V 8180 TRAVELER 004
 S A V MAY 2410
 REMITALL MERCEDES 146M
 LLB BLACKBIRD 330L

S A V NET WORTH 4200
LLB BLACKBIRD 825U
 REMITALL BLACKBIRD 648R

CE	BW	WW	YW	MILK	BOLT	CE	BW	WW	YW	MILK
3	2.9	57	101	28	EPDS	10.8	0.2	67	109	19



FULL SISTER: BLAIRS BLACKBIRD 107X

A full sister to the Blair's Blackbird 107X that was the \$41,000 sale highlight in the Wildcat Creek dispersal to Niobrara Ranch in Nebraska and is an anchor in their donor pen. Blackbird 871E is the most powerful in terms of her design of all her flush mates. Her full sister sells as lot 80.

- Ai'd to Red Blair's Blind Spot 558H on 5/19/2022.
- Preg checked favourable to AI, due late February
- Pasture Exposed to Cockburn Arsenal 8001 from 5/24/2022 to 6/27/2022



80**BLAIR'S BLACKBIRD 328H RC**

BBC 328H | APR. 7, 2020 | 2175936

RED COMPASS MULBERRY 449M
RED FINE LINE MULBERRY 26P
 RED DUS FAYETTE 8G

S A V NET WORTH 4200
LLB BLACKBIRD 825U
 REMITALL BLACKBIRD 648R

RED HR RAMBO ET 91K
 RED BRYLOR MISS ROC 20H
 RED SILVEIRAS REDFORD
 RED MC DOUGALL FAYETTE 59A
 S A V 8180 TRAVELER 004
 S A V MAY 2410
 REMITALL MERCEDES 146M
 LLB BLACKBIRD 330L

CE	BW	WW	YW	MILK	BOLT	CE	BW	WW	YW	MILK
2	3.7	56	100	27	EPDS	10.4	0.2	65	107	21

Her full sister sells as Lot 79.

- Pasture exposed to Cockburn Arsenal 8001 from 5/24/2022 to 6/27/2022
- Preg checked favourable to PE due late March



FULL SIS: BLAIRS BLACKBIRD 107X

81**BLAIR'S BLACKBIRD 581G RC**

BBC 581G | MAR. 3, 2019 | 2085785

RED RMJ REDMAN 1T
RED LAZY MC CC DETOUR 2W
 RED LAZY MC BESS 12S

RED FINE LINE MULBERRY 26P
BLAIR'S BLACKBIRD 514E
 LLB BLACKBIRD 825U

RED 5L NORSEMAN KING 229I
 CROWFOOT KURUBA 4033P
 RED LAZY MC SMASH 41N
 RED LAZY MC BESS 73N
 RED COMPASS MULBERRY 449M
 RED DUS FAYETTE 8G
 S A V NET WORTH 4200
 REMITALL BLACKBIRD 648R

CE	BW	WW	YW	MILK	BOLT	CE	BW	WW	YW	MILK
3	2.6	52	89	27	EPDS	11.1	0	66	104	25

Her Blair's Final Exam 302F son sells on Feb 7th in Pursuit of Excellence Bull Sale.

- Pasture exposed to Cockburn Arsenal 8001 from 5/24/2022 to 6/27/2022.
- Preg checked favourable to PE, due early March.

82**BLAIR'S SUGARLAND 320E RC**

BBC 320E | APR. 6, 2017 | 1981487

SOO LINE MOTIVE 9016
SOO LINE LOCOMOTIVE 1403
 SHADY BROOK EVERENTENSE 2039

RED JORD REDWOOD 72X
RED BLAIRS SUGARLAND 139Z
 RED BLAIR'S SUGRLAND 5U

HF KODIAK 5R
 TLA BEAUTY 5R
 S A V FINAL ANSWER 0035
 SCR EVERELDA ENTENSE 748
 RED BRYLOR SDL REDWOOD 217S
 RED TG LASSIE 55R
 RED BRYLOR SDL PASQUALE 213P
 RED BRYLOR G F SUGRLAND 174S

CE	BW	WW	YW	MILK	BOLT	CE	BW	WW	YW	MILK
8	-0.4	38	67	27	EPDS	13.6	-3.1	52	85	23

We have had tremendous success with Soo Line Locomotive 1403 offspring in Canada & South Africa. I really think the addition of Locomotive into the red gene pool is a neat deal. Take a close look here. Her Kargo 215U son sells on Feb 7th in Pursuit of Excellence 2023.

- Pasture exposed to HF Entertainer 54H from 5/6/2022 to 7/12/2022
- Preg checked favourable to PE due late March



SIRE: SOO LINE LOCOMOTIVE 1403

*Lot 82*



83A

BROOKING MERCURY 9057 X PFLC BARBARA 102D

4 EMBRYOS QUALIFIED FOR CANADA

BROOKING FIREBRAND 6068	BROOKING BANK NOTE 4040
BROOKING MERCURY 9057	BROOKING ANNIE K 390
BROOKING BEAUTY 333	S A V HARVESTOR 0338
	TLA BEAUTY 6R
SILVEIRAS STYLE 9303	GAMBLES HOT ROD
PFLC BARBARA 102D	SILVEIRAS ELBA 2520
BAILEY ACRES BARBARA 2X	S A V NET WORTH 4200
	BAILEY ACRES BARBARA 3P

PE	CE	BW	WW	YW	MILK
	1.0	3.9	62	105	27

Stored at Bow Valley Genetics

83B

BROOKING NATIONAL 0144 X PFLC BARBARA 102D

4 EMBRYOS QUALIFIED FOR CANADA, US, AUSTRALIA, SOUTH AFRICA, EU

S A V RENOVATION 6822	S A V RENOWN 3439
BROOKING NATIONAL 0144	S A V MADAME PRIDE 0151
SOO LINE ROSE 1019	SOO LINE MOTIVE 9016
	E A ROSE 918
SILVEIRAS STYLE 9303	GAMBLES HOT ROD
PFLC BARBARA 102D	SILVEIRAS ELBA 2520
BAILEY ACRES BARBARA 2X	S A V NET WORTH 4200
	BAILEY ACRES BARBARA 3P

PE	CE	BW	WW	YW	MILK
	3.0	2.6	56	99	24

Stored at Bow Valley Genetics

The Barbara 102D is fast becoming a favourite of ours in the donor pasture. She is exactly like her picture with a bold design, great udder, and that sought after Angus look and skull design. We are super excited to get calves on the ground off the matings of both Brooking Mercury 9057 & Brooking National 0144.



SIRE: BROOKING MERCURY 9057



SIRE: BROOKING NATIONAL 0144



SIRE: CONLEY SOUTH POINT 8362



FLUSHMATE TO EMBRYOS :
WILBAR JUNCTURE 45J



MATERNAL SIBLING TO EMBRYOS
WILBAR TORRENT 138K

Mayflower 409E is one of the leading donor cows at Wilbar. She hits a home run on every mating thrown at her. Big-bodied, massive ribbed and perfect uddered, this cow can get it done. She stands on a superior foot and passes on the added heel and correct structure to her calves. Conley South Point 8362 is the International Champion Bull having won both Canadian Western Agribition and Denver Stock Show in the same show season. We can't say enough about both his daughters and sons. There are 11 flush mates to these embryos born to date including Wilbar Juncture 45J, our junior herd sire & two-time Grand Champion Bull, and of course Mayflower 39J, feature lot 16 in this sale. Other progeny include a \$10,000 bull sale highlight in 2022 and her calf this year, Wilbar Torrent 138K currently undefeated bull calf Champion. Whether you get bulls or heifers, there is no guesswork on these embryos.

84

CONLEY SOUTH POINT 8362 X WILBAR MAYFLOWER 409E

3 EMBRYOS QUALIFIED FOR CANADA

- | | |
|--|---|
| STEVENSON TURNING POINT
CONLEY SOUTH POINT 8362
P R LADY 909 4200-587 | PLATTEMERE WEIGH UP K360
STEVENSON PRIDE 1167X
S A V NET WORTH 4200
P R 587 205-537 |
| PLEASANT VALLEY LUTE 1207
WILBAR MAYFLOWER 409E
WILBAR MAYFLOWER 507B | PLAINVIEW LUTTON E102
CHERRY KNOLL ELSA 8014
WILBAR TIGERSHARK 420Y
WILBAR MAYFLOWER 48Z |

PE	CE	BW	WW	YW	MILK
	6.5	1.8	58	97	29

Stored at Bow Valley Genetics

85

BROOKING MERCURY 9057 X BAR-E-L APRIL 51F

4 EMBRYOS QUALIFIED FOR ??

- | | |
|--|--|
| BROOKING FIREBRAND 6068
BROOKING MERCURY 9057
BROOKING BEAUTY 333 | BROOKING BANK NOTE 4040
BROOKING ANNIE K 390
S A V HARVESTOR 0338
TLA BEAUTY 6R
RITO 707 OF IDEAL 3407 7075
S A V BLACKCAP MAY 4136
HF TIGER 5T
BAR-E-L APRIL 85U |
| S A V RESOURCE 1441
BAR-E-L APRIL 51F
BAR-E-L APRIL 82X | |

PE	CE	BW	WW	YW	MILK
	2.0	3.7	65	115	23

Stored at Bow Valley Genetics



We have been huge fans of Dave Longshore and the Bar E-L program for a very long time and it is evident throughout our program. We were excited to add another Bar E-L donor to our program and if you talk to Dave, he will be quick to tell how highly he regards the April 51F female. Look through the pedigree on this embryo mating and imagine what is possible. I can share with you that a maternal sibling to these embryo's will be a feature bull in the Bar E-L bull sale this spring. Grab hold here in Opportunity Knocks 3.0.

Selling 3 Embryos with a guarantee of 1 pregnancy FOB BVGL. These embryos are full sibs to the \$25,500 bred heifer we sold at Red Round-Up a couple months ago to Rohrich Cutting Edge Red Angus, ND. This flush has proven to be very successful. We have 3 flush-mates in production in the herd – one had a great deal of success showing with Kylie in 2021 & has our feature show heifer this fall, another has one of our top black/red sale bulls out of Greenlight and the other is a top prospect in the replacement pen. Flush-mate brothers have been well accepted in our bull sale and maybe the best two are slated to sell this coming spring. Coming In Hot 24E has lit a fire throughout the red breed for his outstanding daughters and stellar sons. The Blockana 357X donor is a cow we hold in high regard. She is a beautiful cow, even in her later years and her track record of producing high-end replacement females is herd-leading.



\$25,500 FULL SIBLING TO EMBRYOS:
RED WILBAR BLOCKANA 837J



SIRE: RED NCJ COMING IN HOT 24E

86

RED NCJ COMING IN HOT 24E X RED WILBAR BLOCKANA 357X

3 EMBRYOS QUALIFIED FOR CANADA

- RRA AVIATOR 507
- RED NCJ COMING IN HOT 24E**
- RED NCJ MINERVA 35C

- RED TER-RON TORNADO 157M
- RED WILBAR BLOCKANA 357X**
- RED WILBAR BLOCKANA 677S

- MUSGRAVE AVIATOR
- RED RRA RACHEL 246 746
- RED NCJ LAZY MC VENOM 34Z
- RED NCJ MINERVA 13S
- RED TER-RON MAMBO 28K
- RED BLUE SPRUCE LARKABA 157A
- RED YY RAMBLER 322N
- RED BAR-E-L CHERRY 94P

PE	CE	BW	WW	YW	MILK
-1.5		1.8	46	83	27

Stored at Bow Valley Genetics

87

CONLEY SOUTH POINT 8362 X WILBAR RUBY 722C

3 EMBRYOS QUALIFIED FOR CANADA, AUSTRALIA, USA

- STEVENSON TURNING POINT
- CONLEY SOUTH POINT 8362**
- P R LADY 909 4200-587

- PLEASANT VALLEY LUTE 1207
- WILBAR RUBY 722C**
- WILBAR RUBY 313K

- PLATTEMERE WEIGH UP K360
- STEVENSON PRIDE 1167X
- S A V NET WORTH 4200
- P R 587 205-537
- PLAINVIEW LUTTON E102
- CHERRY KNOLL ELSA 8014
- EARLY SUNSET HIGH TIME 47G
- WILBAR RUBY 552X

PE	CE	BW	WW	YW	MILK
5.5		1.4	49	78	26

Stored at Bow Valley Genetics

WILBAR RUBY 851H AJAA RES. SUPREME CHAMPION, FULL SIBLING TO EMBRYOS



If sweet, attractive females that will wow the judges in the show ring is on your radar, consider this mating. In the summer of 2021, Owen blazed a trail of banners through the 2021 summer show circuit with a full sister to these embryos. She is possibly one of our favorite South Point daughters (Just ask Owen!) She is already in our donor program. Take note, 722C hails from the famous Wilbar Ruby cow family, most known for producing the immortal HF Kodiak 5R. The Rubies are very maternal females with great production and a long list of Angus heritage, dating far back into our early years in the Angus business.



Blairs.Ag

cattle company

BLAIRS.AG CATTLE COMPANY

Kevin and Noreen Blair
 Darren and Deb Blair
 Kevin's Cell: 306-365-7922
 kevin@blairs.ag
 www.blairscattleco.com



BLAIRSWEST LAND AND CATTLE

Scott and Calla Blair
 Cameron, Nolan, Maguire
 Scott's Cell: 306-365-7649
 Calla's Cell: 306-365-7799
 Maguire's Cell: 306-360-7716
 calla7799@gmail.com
 www.blairswest.net



DOUBLE B ANGUS

Baxter Blair
 Baxter's Cell: 306-699-7807
 baxterblair17@gmail.com
 Craig's Cell: 1(306)699-7607
 Chara's Cell: 1(306)699-7037



WILBAR CATTLE CO.

Bryan and Tracey Willms
 Owen and Kylie
 Bryan's Cell: 306-492-7504
 Tracey's Cell: 306-380-6772
 wilbarcattle@gmail.com
 www.wilbarcattle.com



Terms & Conditions

Terms:

The terms of the sale are cash or cheque, payable at par at the sale location. The right of property shall not pass until after settlement has been made; no invoicing on buyers in attendance unless previous arrangements have been made. Every animal sells to the highest bidder and in cases of disputes the auctioneer's decision will be final. Announcements from the auction block will take precedence over the printed matter in the catalogue. Current exchange rates will be announced sale day. All monies are in Canadian funds.

Certificate of Registration:

Each animal will carry papers issued by the Canadian Angus Association, unless otherwise specified. A certificate of registry duly transferred will be furnished to the buyer for each animal after payment has been made.

Pedigree Estimates:

Pedigree Estimates (PE) are created on the projected mating of the animal's sire and dam based on averages of the two, creating estimated values that do not hold the same accuracy of actual EPDs issued from the association and should be used as such.

Health:

All animals in the sale have met all necessary health requirements.

Guarantee:

Each animal becomes the purchaser's risk immediately after the animal is sold. All animals in this sale will be sold under the terms and guarantees set forth by the Canadian Angus Association with regard to health, freedom from defects and from both reproductive and specific genetic unsoundness.

Pregnancy Information:

All serviceable age females have been pregnancy examined by an accredited ultrasound technician, giving an estimated length of gestation. This estimated gestation period shall be used only as a guideline to calving and is not a guarantee of actual service.

Liabilities:

All persons attend the sale at their own risk. The sellers, facility owner, auctioneer and sale manager assume no liability, legal or otherwise, for any accidents that occur. It is understood that T Bar C Cattle Co. (2013) Ltd. is acting only as a medium between buyer and seller and is not responsible for any failure on the part of either part to live up to his obligations. Neither does T Bar C Cattle Co. (2013) Ltd. assume any financial obligations to collect or enforce collection of any monies between parties and any legal action that may in exceptional cases be taken must be between the buyer and the seller. T Bar C Cattle Co. (2013) Ltd. assumes no responsibility for any credit extended by the seller to the buyer. The buyer must look to the seller for fulfillment of all guarantees and representations made hereunder.

Delivery:

Every assistance will be given in getting your purchases home. Each animal becomes the risk of the purchaser as soon as sold.

Phone, Mail, Wire Bids:

Bidders unable to attend the sale may phone, wire or mail their bids and instructions to the sale manager, auctioneer or special representatives. Bids must be received in sufficient time prior to the sale.

Insurance:

Agents will be in attendance to insure your purchases. We strongly recommend that insurance is purchased for full value.

Errors:

All announcements at sale time, written or oral, supersede any written material in the catalogue.

Directions

½ mile west of Lanigan and 4 miles south

70 Miles from Saskatoon International Airport

95 Miles from Regina International Airport



Return Undeliverable
Canadian Addresses To:
T Bar C Cattle Co. Ltd.
Box 2330
Warman, Saskatchewan S0K 4S0



BLAIRS.AG CATTLE CO.
THE **PURSUIT** of
EXCELLENCE

TUESDAY, FEBRUARY 7, 2023
Jackson Cattle Co. Sale Facility
Sedley, Saskatchewan

Bull Sale



28th Annual Tools Of The Trade
Angus Bull & Female
Wednesday, March 15, 2023



THE BLAIRSWEST BULL SALE
MONDAY, MARCH 13, 2023
DLMS TIMED AUCTION

CREATED BY

